



WHITLAM CHEMICAL AND PLUMB-PRO[®] QUALITY TOOLS



EFFECTIVE MAY 15, 2023
CATALOG - 90C

WHITLAM AND PLUMB-PRO QUALITY TOOLS



The Industry Standard for Over 100 Years



Red Devil



- CATEGORY 1
- CATEGORY 2
- CATEGORY 3
- CATEGORY 4
- CATEGORY 5
- CATEGORY 6
- CATEGORY 7

- CATEGORY 8
- CATEGORY 9
- CATEGORY 10
- CATEGORY 11
- CATEGORY 12

- CATEGORY 13
- CATEGORY 14

- CATEGORY 15

- CATEGORY 16

Solvent Cements, Primers, Cleaners.....	3 - 7
Thread Sealants, Thread Sealant Tape	8 - 10
Putty, Coatings, Oils	10 - 11
Red Devil® Products	12
Caulking Guns, Abrasive Cloths, Fitting Brushes, Flux, Grease	13 - 14
Pipe Gasket Lubricants	14
System Descaler, Trap Primer, Drain Openers, Drain Cleaners, Hand Cleaners	15 - 16
Toilet Bolts and Bowl Wax	17 - 19
Anti-Freeze & Heating Products	20 - 21
Highside Chemicals	22
Screwdrivers, Tie Down Straps	22 - 23
Pick Mattock, Sledgehammers, Shovels, Spades, Soil Probes, Meter Keys, Valve Wrenches	23 - 25
Channellock® Pliers, Socket Wrench, Pliers, Plumbing Wrenches	26 - 27
Saws, Plastic Pipe Cutters, Internal Pipe Cutters, Pipe Fitting Reamers, Bevelers	28 - 31
Pipe Vent Screens, Inverted Marking Paint, Marking Guns, Leak Tracer Dyes	32
Cans, Daubers, Swab Applicators, Miscellaneous Tools, PVC Pipe Wrap Tape, Caution Tape	33 - 34
DISPLAYS	35
TERMS	36
WHITLAM HISTORY	37
INDEX.....	38 - 39



J.C. Whitlam Manufacturing
Headquarters consists of more than 100,000 square feet of offices, plant, warehousing and laboratory facilities in northeastern Ohio. Chemical containment tanks, shown above, allow proper storage and quick retrieval.

Possession of this price catalog shall not be construed as an offer to sell products listed.

PVC SOLVENT CEMENTS

PVC CLEAR REGULAR BODIED LOW VOC CEMENT* A fast set for use through 4" (10.16 cm) diameter Sch. 40 and 1-1/4" (3.17 cm) Sch. 80 PVC pressure pipe and through 6" (15.24 cm) diameter non-pressure pipe. Meets ASTM D2564. **Made in the U.S.A.**

STOCK CODE	SIZE	CONTAINER	ITEMS/CASE	CASE WEIGHT
PRL4	1/4 Pint - 118 ml	Dauber Top Can	24	10 lbs. - 4.5 kg
PRL8	1/2 Pint - 237 ml	Dauber Top Can	24	16 lbs. - 7.3 kg
PRL16	Pint - 473 ml	Dauber Top Can	12	15 lbs. - 6.8 kg
PRL32	Quart - .95 L	Dauber Top Can	12	28 lbs. - 12.7 kg
PRL1	Gallon - 3.785 L	Wide Mouth Can w/Handle	6	56 lbs. - 25.4 kg



PVC CLEAR MEDIUM BODIED LOW VOC CEMENT* A medium set for use through 6" (15.24 cm) diameter Sch. 40 & Sch. 80 PVC pressure pipe and through 8" (20.32 cm) diameter non-pressure pipe. Meets ASTM D2564. **Made in the U.S.A.**

PL4	1/4 Pint - 118 ml	Dauber Top Can	24	10 lbs. - 4.5 kg
PL8	1/2 Pint - 237 ml	Dauber Top Can	24	16 lbs. - 7.3 kg
PL16	Pint - 473 ml	Dauber Top Can	12	15 lbs. - 6.8 kg
PL32	Quart - .95 L	Dauber Top Can	12	29 lbs. - 13.2 kg
PL1	Gallon - 3.785 L	Wide Mouth Can w/ Handle	6	56 lbs. - 25.4 kg



PVC CLEAR HEAVY DUTY ONE STEP LOW VOC CEMENT* A medium set for use through 12" (30.48 cm) diameter Sch. 40 & Sch. 80 PVC pressure pipe and through 16" (40.64 cm) diameter non-pressure pipe. Recommended as a One-Step solvent weld cement for Drain, Waste and Vent (DWV) pipe and fittings in non-pressure applications in sizes up to 4" (10.16 cm) where acceptable by local code. Meets ASTM D2564. **Made in the U.S.A.**

HDP4	1/4 Pint - 118 ml	Dauber Top Can	24	10 lbs. - 4.5 kg
HDP8	1/2 Pint - 237 ml	Dauber Top Can	24	16 lbs. - 7.3 kg
HDP16	Pint - 473 ml	Dauber Top Can	12	15 lbs. - 6.8 kg
HDP32	Quart - .95 L	Dauber Top Can	12	29 lbs. - 13.2 kg
HDP1	Gallon - 3.785 L	Wide Mouth Can w/ Handle	6	56 lbs. - 25.4 kg



ONE STEP CEMENT

PVC BLUE HEAVY DUTY ONE STEP LOW VOC CEMENT*

HDB32	Quart - .95 L	Dauber Top Can	12	29 lbs. - 13.2 kg
HDB1	Gallon - 3.785 L	Wide Mouth Can w/ Handle	6	56 lbs. - 25.4 kg



ONE STEP CEMENT

PVC WHITE HEAVY DUTY ONE STEP LOW VOC CEMENT*

HDW32	Quart - .95 L	Dauber Top Can	12	29 lbs. - 13.2 kg
HDW1	Gallon - 3.785 L	Wide Mouth Can w/ Handle	6	56 lbs. - 25.4 kg



ONE STEP CEMENT

PVC CLEAR HEAVY BODIED LOW VOC CEMENT* A slow set for use through 12" (30.48 cm) diameter Sch. 40 & Sch. 80 PVC pressure pipe and through 16" (40.64 cm) diameter non-pressure pipe. Meets ASTM D2564. **Made in the U.S.A.**

HPL16	Pint - 473 ml	Dauber Top Can	12	15 lbs. - 6.8 kg
HPL32	Quart - .95 L	Dauber Top Can	12	28 lbs. - 12.7 kg
HPL1	Gallon - 3.785 L	Wide Mouth Can w/ Handle	6	56 lbs. - 25.4 kg



PVC GRAY MEDIUM BODIED LOW VOC CEMENT* A medium set for use through 6" (15.24 cm) diameter Sch. 40 & Sch. 80 PVC pressure pipe and through 8" (20.32 cm) diameter non-pressure pipe. Meets ASTM D2564. **Made in the U.S.A.**

GL16	Pint - 473 ml	Dauber Top Can	12	16 lbs. - 7.3 kg
GL32	Quart - .95 L	Dauber Top Can	12	28 lbs. - 12.7 kg
GL1	Gallon - 3.785 L	Wide Mouth Can w/ Handle	6	56 lbs. - 25.4 kg



*D.O.T. Classified Shipping Items. See Page 36. Pallet Quantities for Plastic Solvent Cements & Cleaners: 1/4 Pint = 130 Cases, 1/2 Pint = 80 Cases, 1 Pint = 80 Cases, 1 Quart = 56 Cases, 1 Gallon = 27 Cases

PVC SOLVENT CEMENTS



PVC GRAY SCH. 80 HEAVY BODIED LOW VOC CEMENT* A slow set for use through 12" (30.48 cm) diameter Sch. 40 & Sch. 80 PVC pressure pipe and through 16" (40.64 cm) diameter non-pressure pipe. Meets ASTM D2564 **Made in the U.S.A.**

STOCK CODE	SIZE	CONTAINER	ITEMS/CASE	CASE WEIGHT
PGL16	Pint - 437 ml	Dauber Top Can	12	16 lbs. - 7.3 kg
PGL32	Quart - .95 L	Dauber Top Can	12	28 lbs. - 12.7 kg
PGL1	Gallon - 3.785 L	Wide Mouth Can w/ Handle	6	56 lbs. - 25.4 kg



PVC WHITE EXTRA HEAVY BODIED LOW VOC CEMENT* A slow set for use through 30" (76.2 cm) diameter Sch. 40 & Sch. 80 PVC pressure pipe. Meets ASTM D2564. **Made in the U.S.A.**

XHW32	Quart - .95 L	Flat Top Can	12	29 lbs. - 13.2 kg
XHW1	Gallon - 3.785 L	Paint Can w/ Handle	4	37 lbs. - 16.8 kg
XHW55	55 Gallon - 208 L	Drum	1	498 lbs. - 225.9 kg



PVC GRAY EXTRA HEAVY BODIED LOW VOC CEMENT* A slow set for use through 30" (76.2 cm) diameter Sch. 40 & Sch. 80 PVC pressure pipe. Meets ASTM D2564. **Made in the U.S.A.**

XHG32	Quart - .95 L	Flat Top Can	12	29 lbs. - 13.2 kg
XHG1	Gallon - 3.785 L	Paint Can w/ Handle	4	37 lbs. - 16.8 kg
XHG55	55 Gallon - 208 L	Drum	1	498 lbs. - 225.9 kg

ONE STEP CEMENT



"WEATHERPROOF" CLEAR MEDIUM BODIED WET/DRY ONE STEP LOW VOC PVC CEMENT* A fast One Step** cement for use on all classes and schedules of PVC pressure pipe (including Sch. 80) through 6" (15.24 cm) diameter and on non-pressure systems through 8" (20.32 cm) diameter. Meets ASTM D2564. **Made in the U.S.A.**

PCW4	1/4 Pint - 118 ml	Dauber Top Can	24	10 lbs. - 4.5 kg
PCW8	1/2 Pint - 237 ml	Dauber Top Can	24	16 lbs. - 7.3 kg
PCW16	Pint - 473 ml	Dauber Top Can	12	15 lbs. - 6.8 kg
PCW32	Quart - .95 L	Dauber Top Can	12	28 lbs. - 12.7 kg
PCW1	Gallon - 3.785 L	Wide Mouth Can w/ Handle	6	56 lbs. - 25.4 kg

ONE STEP CEMENT



"WEATHERPROOF" BLUE MEDIUM BODIED WET/DRY ONE STEP LOW VOC PVC CEMENT* A fast One Step** cement for use on all classes and schedules of PVC pressure pipe (including Sch. 80) through 6" (15.24 cm) diameter and on non-pressure systems through 8" (20.32 cm) diameter. Meets ASTM D2564. **Made in the U.S.A.**

WET4	1/4 Pint - 118 ml	Dauber Top Can	24	10 lbs. - 4.5 kg
WET8	1/2 Pint - 237 ml	Dauber Top Can	24	16 lbs. - 7.3 kg
WET8A	1/2 Pint - 237 ml	Dauber Top Can (Display Box)	12	9 lbs. - 4.1 kg
WET16	Pint - 473 ml	Dauber Top Can	12	15 lbs. - 6.8 kg
WET32	Quart - .95 L	Dauber Top Can	12	28 lbs. - 12.7 kg
WET1	Gallon - 3.785 L	Wide Mouth Can w/ Handle	6	56 lbs. - 25.4 kg

ONE STEP CEMENT



"PRO-GREEN" IRRIGATION, MEDIUM BODIED LOW VOC PVC CEMENT* A fast one step** cement for use through 3" (7.62 cm) diameter on all classes of PVC pressure pipe (except Sch. 80), and 6" (15.24 cm) diameter on non-pressure PVC pipe where pipe pulling is required and conditions are wet and/or quick pressurization is needed. Meets ASTM D2564. **Made in the U.S.A.**

IR4	1/4 Pint - 118 ml	Dauber Top Can	24	10 lbs. - 4.5 kg
IR8	1/2 Pint - 237 ml	Dauber Top Can	24	16 lbs. - 7.3 kg
IR8A	1/2 Pint - 237 ml	Dauber Top Can (Display Box)	12	9 lbs. - 4.1 kg
IR16	Pint - 473 ml	Dauber Top Can	12	15 lbs. - 6.8 kg
IR32	Quart - .95 L	Dauber Top Can	12	28 lbs. - 12.7 kg
IR1	Gallon - 3.785 L	Wide Mouth Can w/ Handle	6	56 lbs. - 25.4 kg

ONE STEP CEMENT



"SHARK-BITE" AQUA BLUE MEDIUM BODIED POOL/SPA ONE STEP LOW VOC PVC CEMENT* A One Step** cement for use through 3" (7.62 cm) diameter on all classes of PVC pressure pipe (except Sch. 80), and 6" (15.24 cm) diameter on non-pressure PVC pipe. Meets ASTM D2564. **Made in the U.S.A.**

SB4	1/4 Pint - 118 ml	Dauber Top Can	24	10 lbs. - 4.5 kg
SB8	1/2 Pint - 237 ml	Dauber Top Can	24	16 lbs. - 7.3 kg
SB8A	1/2 Pint - 237 ml	Dauber Top Can (Display Box)	12	9 lbs. - 4.1 kg
SB16	Pint - 473 ml	Dauber Top Can	12	15 lbs. - 6.8 kg
SB32	Quart - .95 L	Dauber Top Can	12	28 lbs. - 12.7 kg
SB1	Gallon - 3.785 L	Wide Mouth Can w/ Handle	6	56 lbs. - 25.4 kg

* D.O.T. Classified Shipping Items. See Page 36. ** Suitable to be used as a One-Step Cement for joining PVC Drain, Waste and Vent (DWV) pipe and fittings in non-pressure applications in sizes up to and including 4 inches where acceptable by local code. Pallet Quantities for Plastic Solvent Cements & Cleaners: 1/4 Pint = 130 Cases, 1/2 Pint = 80 Cases, 1 Pint = 80 Cases, 1 Quart = 56 Cases, 1 Gallon = 27 Cases.

CPVC SOLVENT CEMENTS

CPVC YELLOW MEDIUM BODIED ONE STEP LOW VOC CEMENT* Use through 2" (5.08 cm) diameter CPVC pipe, CTS (copper tube size) and potable water pressure pipe. Medium bodied cement for use on CPVC and FlowGuard Gold® pipe and fittings. Exceeds ASTM F493 and ASTM D2846. **Made in the U.S.A.**

STOCK CODE	SIZE	CONTAINER	ITEMS/CASE	CASE WEIGHT
CPL4	1/4 Pint - 118 ml	Dauber Top Can	24	10 lbs. - 4.5 kg
CPL8	1/2 Pint - 237 ml	Dauber Top Can	24	16 lbs. - 7.3 kg
CPL16	Pint - 473 ml	Dauber Top Can	12	15 lbs. - 6.8 kg
CPL32	Quart - .95 L	Dauber Top Can	12	28 lbs. - 12.7 kg



CPVC ORANGE MEDIUM BODIED LOW VOC CEMENT* Use through 6" (15.24 cm) diameter Sch. 40 CPVC pipe and through 1-1/2" (3.81 cm) diameter Sch. 80 CPVC pipe. Meets ASTM F493 and ASTM D2846. **Made in the U.S.A.**

STOCK CODE	SIZE	CONTAINER	ITEMS/CASE	CASE WEIGHT
CPV4	1/4 Pint - 118 ml	Dauber Top Can	24	10 lbs. - 4.5 kg
CPV8	1/2 Pint - 237 ml	Dauber Top Can	24	16 lbs. - 7.3 kg
CPV16	Pint - 473 ml	Dauber Top Can	12	15 lbs. - 6.8 kg
CPV32	Quart - .95 L	Dauber Top Can	12	28 lbs. - 12.7 kg



CPVC GRAY HEAVY BODIED LOW VOC CEMENT* Use through 12" (30.48 cm) diameter Sch. 40 CPVC pipe and through 6" (15.24 cm) diameter Sch. 80 CPVC pipe. Meets ASTM F493 and ASTM D2846. **Made in the U.S.A.**

STOCK CODE	SIZE	CONTAINER	ITEMS/CASE	CASE WEIGHT
CPG16	Pint - 473 ml	Dauber Top Can	12	15 lbs. - 6.8 kg
CPG32	Quart - .95 L	Dauber Top Can	12	29 lbs. - 12.2 kg
CPG1	Gallon - 3.785 L	Wide Mouth Can w/ Handle	6	56 lbs. - 25.4 kg



ALL-PURPOSE SOLVENT CEMENTS

ALL PURPOSE CLEAR REGULAR BODIED LOW VOC CEMENT* Use through 4" (10.16 cm) diameter Sch. 40 & Sch. 80 ABS, PVC and Sch. 40 CPVC pipe. **Made in the U.S.A.**

STOCK CODE	SIZE	CONTAINER	ITEMS/CASE	CASE WEIGHT
APR4	1/4 Pint - 118 ml	Dauber Top Can	24	10 lbs. - 4.5 kg
APR8	1/2 Pint - 237 ml	Dauber Top Can	24	16 lbs. - 7.3 kg
APR16	Pint - 473 ml	Dauber Top Can	12	15 lbs. - 6.8 kg
APR32	Quart - .95 L	Dauber Top Can	12	28 lbs. - 12.7 kg
APR1	Gallon - 3.785 L	Wide Mouth Can w/ Handle	6	56 lbs. - 25.4 kg



ALL PURPOSE CLEAR, MEDIUM BODIED, HEAVY DUTY LOW VOC CEMENT* Use through 6" (15.24 cm) diameter Sch. 40 & Sch. 80 ABS, PVC and CPVC Pipe. **Made in the U.S.A.**

STOCK CODE	SIZE	CONTAINER	ITEMS/CASE	CASE WEIGHT
AP4	1/4 Pint - 118 ml	Dauber Top Can	24	10 lbs. - 4.5 kg
AP8	1/2 Pint - 237 ml	Dauber Top Can	24	16 lbs. - 7.3 kg
AP16	Pint - 473 ml	Dauber Top Can	12	15 lbs. - 6.8 kg
AP32	Quart - .95 L	Dauber Top Can	12	28 lbs. - 12.7 kg



ABS SOLVENT CEMENTS

ABS BLACK MEDIUM BODIED LOW VOC CEMENT* Use through 6" (15.24 cm) diameter ABS pressure and Drain, Waste and Vent (DWV) pipe. Meets ASTM D2235. **Made in the U.S.A.**

STOCK CODE	SIZE	CONTAINER	ITEMS/CASE	CASE WEIGHT
AL4	1/4 Pint - 118 ml	Dauber Top Can	24	10 lbs. - 4.5 kg
AL8	1/2 Pint - 237 ml	Dauber Top Can	24	16 lbs. - 7.3 kg
AL16	Pint - 473 ml	Dauber Top Can	12	15 lbs. - 6.8 kg
AL32	Quart - .95 L	Dauber Top Can	12	28 lbs. - 12.7 kg
AL1	Gallon - 3.785 L	Wide Mouth Can w/ Handle	6	56 lbs. - 25.4 kg



FlowGuard Gold® is a Registered Trademark of The Lubrizol Corporation. *D.O.T. Classified Shipping Items. See Page 36.
Pallet Quantities for Plastic Solvent Cements & Cleaners: 1/4 Pint = 130 Cases, 1/2 Pint = 80 Cases, 1 Pint = 80 Cases, 1 Quart = 56 Cases, 1 Gallon = 27 Cases.

CATEGORY 1

SOLVENT CEMENTS, PRIMERS & CLEANERS

TRANSITION SOLVENT CEMENT



“SWITCH” TRANSITION GREEN MEDIUM BODIED LOW VOC CEMENT* A fast set cement for use through 6" (15.24 cm) diameter for joining ABS pipe or fittings to PVC pipe or fittings. Meets ASTM D3138. **Made in the U.S.A.**

STOCK CODE	SIZE	CONTAINER	ITEMS/CASE	CASE WEIGHT
TC16	Pint - 473 ml	Dauber Top Can	12	15 lbs. - 6.8 kg
TC32	Quart - .95 L	Dauber Top Can	12	28 lbs. - 12.7 kg

PRIMERS



LOW VOC CLEAR PRIMER* For use on all PVC, ABS and CPVC pipe and fittings. Meets ASTM F656. **Made in the U.S.A.**

PCL4	1/4 Pint - 118 ml	Dauber Top Can	24	9 lbs. - 4.1 kg
PCL8	1/2 Pint - 237 ml	Dauber Top Can	24	15 lbs. - 6.8 kg
PCL16	Pint - 473 ml	Dauber Top Can	12	14 lbs. - 6.4 kg
PCL32	Quart - .95 L	Dauber Top Can	12	26 lbs. - 11.8 kg
PCL1	Gallon - 3.785 L	Can w/ Handle	6	50 lbs. - 22.7 kg



LOW VOC PURPLE PRIMER* For use on all PVC, ABS and CPVC pipe and fittings. Dyes plastic purple. Meets ASTM F656. **Made in the U.S.A.**

PPL4	1/4 Pint - 118 ml	Dauber Top Can	24	9 lbs. - 4.1 kg
PPL8	1/2 Pint - 237 ml	Dauber Top Can	24	15 lbs. - 6.8 kg
PPL16	Pint - 473 ml	Dauber Top Can	12	14 lbs. - 6.4 kg
PPL32	Quart - .95 L	Dauber Top Can	12	26 lbs. - 11.8 kg
PPL1	Gallon - 3.785 L	Can w/ Handle	6	50 lbs. - 22.7 kg

CLEANERS



LOW VOC CLEAR CLEANER* For use on all PVC, ABS and CPVC pipe and fittings. **Made in the U.S.A.**

C4	1/4 Pint - 118 ml	Dauber Top Can	24	9 lbs. - 4.1 kg
C8	1/2 Pint - 237 ml	Dauber Top Can	24	15 lbs. - 6.8 kg
C16	Pint - 473 ml	Dauber Top Can	12	14 lbs. - 6.4 kg
C32	Quart - .95 L	Dauber Top Can	12	25 lbs. - 11.3 kg
C1	Gallon - 3.785 L	Can w/ Handle	6	50 lbs. - 22.7 kg

DRAINPIPE ADHESIVE



TALON DRAINPIPE ADHESIVE is excellent for bonding high density polyethylene (HDPE) drainage pipe and heavy-duty smooth wall polyethylene (PE) drainage pipe as well as bonding PVC to HDPE drainage pipe. Once fully cured, TALON DRAINPIPE ADHESIVE creates a permanent watertight seal to prevent root intrusion at the joint. Not recommended for pressure systems.

DPA16	Pint - 473 ml	Dauber Top Can	12	15 lbs. - 6.8 kg
-------	---------------	----------------	----	------------------

3 YEAR LIMITED WARRANTY

Whitlam Cements, Primers and Cleaners are made with the highest quality materials and meet or exceed their relative ASTM Specifications. All information provided is based on our laboratory testing, independent laboratory test results, and actual field experience. Properly used, Whitlam Cements, Primers and Cleaners will perform in accordance with applicable standards. Whitlam Cements, Primers and Cleaners will maintain a 3 year shelf life from date of manufacture if unopened or unused. Since we are unable to control conditions for with the product is being used, our only obligation will be the replacement of the product. See the Limited and Guaranteed Sale and Return Policy for additional information.

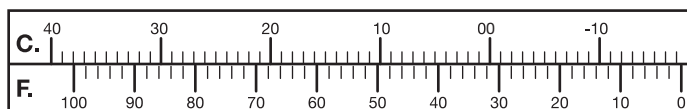
Average Joint Cure Schedule For WHITLAM PVC/CPVC Solvent Cements**

Relative Humidity 60% or Less	Cure Time Pipe Sizes ½" to 1 ¼"		Cure Time Pipe Sizes 1 ½" to 2"		Cure Time Pipe Sizes 2 ½" to 8"		Cure Time Pipe Sizes 10" to 15"		Cure Time Pipe Sizes 15"+	
	up to 160 psi	160 to 370 psi	up to 160 psi	above 160 to 315 psi	up to 160 psi	above 160 to 315 psi	up to 100 psi		up to 100 psi	
60°-100°F	15 min	6 hrs	30 min	12 hrs	1 ½ hrs	24 hrs	48 hrs		72 hrs	
40°-60°F	20 min	12 hrs	45 min	24 hrs	4 hrs	48 hrs	96 hrs		6 days	
0°-40°F	30 min	48 hrs	1 hr	96 hrs	72 hrs	8 days	8 days		14 days	

Note - Joint cure schedule is the necessary time to allow before pressurizing system. In damp or humid weather allow 50% more cure time.

**These figures are estimates based on our laboratory tests; extended cure times are required for chemical applications. Due to many variables in the field, these figures should be used as a general guide only.

Fahrenheit to Celsius Conversion Chart



*D.O.T. Classified Shipping Items. See Page 36. Pallet Quantities for Plastic Solvent Cements, Primers & Cleaners: 1/4 Pint = 130 Cases, 1/2 Pint = 80 Cases, 1 Pint = 80 Cases, 1 Quart = 56 Cases, 1 Gallon = 27 Cases.

PVC

nominal pipe size in inches	REGULAR BODY	MEDIUM BODY		HEAVY DUTY	HEAVY BODY		SPECIALTY CEMENTS					
	PRL	PL	GL	HDP	HPL	PGL	PCW	IR	TP	SB	WET	
14"												
12"												
10"												
8"												
6"												
4"												
3"												
1-1/2"												
2"												
1-1/2"												
1-1/4"												
1"												
3/4"												
1/2"												

Can be used without primer with fittings having an interference fit (unless required by local code)



WHITLAM produces a wide range of high strength solvent cements for rigid and flexible plastic pipe fittings. These products are ideal for use with potable water pressure systems, irrigation, turf, conduit, pool, spa, industrial piping, sewer, drain, waste and vent systems.

- SCHEDULE 40 PRESSURE
- SCHEDULE 80 PRESSURE

nominal pipe size in inches	CPVC			ABS	MULTI-PURPOSE			PRIMERS CLEANERS		
	CPV	CPL	CPG	AL	TC**	AP*	APR*	C	PPL	PCL
30"										
24"										
14"										
12"										
10"										
8"										
6"										
4"										
3"										
1-1/2"										
2"										
1-1/2"										
1-1/4"										
1"										
3/4"										
1/2"										

*Suitable for use with PVC, CPVC, ABS.
**Suitable for transition from ABS to PVC.



Average Initial Set Schedule For WHITLAM PVC/CPVC Solvent Cements**

Temperature Range	Pipe Sizes 1/2" to 1 1/4"	Pipe Sizes 1 1/2" to 2"	Pipe Sizes 2 1/2" to 8"	Pipe Sizes 10" to 15"	Pipe Sizes 15"+
60°-100°F	2 minutes	5 minutes	30 minutes	2 hours	4 hours
40°-60°F	5 minutes	10 minutes	2 hours	8 hours	16 hours
0°-40°F	10 minutes	15 minutes	12 hours	24 hours	48 hours

Note - Initial set schedule is the necessary time to allow before the joint can be carefully handled. In damp or humid weather allow 50% more set time.

**These figures are estimates based on our laboratory tests using water; extended set times are required for chemical applications. Due to many variables in the field, these figures should be used as a general guide only.

Average Number of Joints per Quart of WHITLAM Cement and Primer*

Pipe Diameter	1/2"	3/4"	1"	1 1/2"	2"	3"	4"	6"	8"	10"	12"	15"	18"
Number of Joints	300	200	125	90	60	40	30	10	5	2-3	1-2	3/4	1/2

For Primer: Double the number of joints shown for cement. *These figures are estimates based on our laboratory tests. Due to many variables in the field, these figures should be used as a general guide only. Note: 1 joint = 1 socket

THREAD SEALANTS



Gray

TYTE-UNYTE® Non-hardening gray pipe joint compound in paste form. No drip, thixotropic formula. For air, steam, natural gas and water. "Standard of the Industry Since 1900." For use on all metal threads. Meets Federal Specification TT-A-580D. **Made in the U.S.A.**

STOCK CODE	SIZE	CONTAINER	ITEMS/CASE	CASE WEIGHT
T2*	2 oz. - .056 kg	Tube**	72	10 lbs. - 4.5 kg
T8	1/2 Pint/1 lb. - .454 kg	Brush Top Can	24	26 lbs. - 11.8 kg
T8C*	1/2 Pint/1 lb. - .454 kg	Brush Top Can	24	26 lbs. - 11.8 kg
T16	Pint/2 lbs. - .92 kg	Brush Top Can	12	25 lbs. - 11.3 kg
T6	6 lbs. - 2.72 kg	Pail w/ Handle	4	31 lbs. - 14.1 kg
T50	50 lbs./5 gal. - 22.68 kg	Pail w/ Handle	1	54 lbs. - 24.5 kg
T600	600 lbs./55 gal. - 208 L	55 Gallon Drum	1	640 lbs. - 290.3 kg



Dark Gray

STEEL-UNYTE Pipe joint, thread and hard set sealer, dark gray, semi-paste for use on all metal threaded connections and flanges. Meets Military Specification MIL-S-7916B. Meets International Fuel Gas Code 403.9.3 for Thread Joint Compounds. **Made in the U.S.A.**

ST8	1/2 Pint - 237 ml	Brush Top Can	24	23 lbs. - 10.4 kg
ST8A	1/2 Pint - 237 ml	Brush Top Can (Display Box)	12	11 lbs. - 5.0 kg
ST16	Pint - 473 ml	Brush Top Can	12	22 lbs. - 10.0 kg
ST5	5 Gallon - 18.9 L	Pail w/ Handle	1	65 lbs. - 29.5 kg
ST55	55 Gallon - 208 L	55 Gallon Drum	1	640 lbs. - 290.3 kg



pw-G/dwv/sw



Yellow

T-U TYPE 555 Soft-set, yellow thread sealing compound for use on plastic and metal threaded systems carrying air, steam, petroleum, water, gases and many chemicals. Meets Federal Specification TT-S-1732. Meets International Fuel Gas Code 403.9.3 for Thread Joint Compounds. **Made in the U.S.A.**

TU4	1/4 Pint - 118 ml	Brush Top Can	24	14 lbs. - 6.4 kg
TU8	1/2 Pint - 237 ml	Brush Top Can	24	23 lbs. - 10.4 kg
TU8C*	1/2 Pint - 237 ml	Brush Top Can	24	23 lbs. - 10.4 kg
TU16	Pint - 473 ml	Brush Top Can	12	22 lbs. - 10.0 kg
TU32	Quart - .95 L	Brush Top Can	12	41 lbs. - 18.6 kg
TU5	5 Gallon - 18.9 L	Pail w/ Handle	1	65 lbs. - 29.5 kg
TU55	55 Gallon - 208 L	55 Gallon Drum	1	640 lbs. - 290.3 kg



pw-G/dwv/sw



Blue

BLUE MAGIC All purpose, non-seizing, industrial grade pipe thread compound that produces a leakproof seal on all types of metal and plastic threaded connections. Suitable for ABS, PVC, and CPVC threaded connections. Approved for use on Spears FlameGuard® CPVC Systems. Meets Federal Specification TT-S-1732. Meets International Fuel Gas Code 403.9.3 for Thread Joint Compounds. **Made in the U.S.A.**

IG2	2 oz. - .056 kg	Tube**	72	11 lbs. - 5.0 kg
IG4	1/4 Pint - 118 ml	Brush Top Can	24	15 lbs. - 6.8 kg
IG8	1/2 Pint - 237 ml	Brush Top Can	24	24 lbs. - 10.9 kg
IG8A	1/2 Pint - 237 ml	Brush Top Can (Display Box)	12	13 lbs. - 5.9 kg
IG8C*	1/2 Pint - 237 ml	Brush Top Can	24	24 lbs. - 10.9 kg
IG8CA*	1/2 Pint - 237 ml	Brush Top Can (Display Box)	12	13 lbs. - 5.9 kg
IG16	Pint - 473 ml	Brush Top Can	12	22 lbs. - 10.0 kg
IG16C*	Pint - 473 ml	Brush Top Can	12	22 lbs. - 10.0 kg
IG32	Quart - .95 L	Brush Top Can	12	42 lbs. - 19.1 kg
IG5	5 Gallon - 18.9 L	Pail w/ Handle	1	65 lbs. - 29.5 kg
IG55	55 Gallon - 208 L	55 Gallon Drum	1	640 lbs. - 290.3 kg



Compatible

SELECT-UNYTE Soft-set, white all purpose PTFE paste thread sealing compound. For use on plastic and metal threaded systems carrying air, steam, petroleum, water, gases and many chemicals.

Meets Federal Specification TT-S-1732. Meets International Fuel Gas Code 403.9.3 for Thread Joint Compounds. **Made in the U.S.A.**

TF2	2 oz. - .056 kg	Tube**	72	11 lbs. - 5.0 kg
TF4	1/4 Pint - 118 ml	Brush Top Can	24	15 lbs. - 6.8 kg
TF8	1/2 Pint - 237 ml	Brush Top Can	24	23 lbs. - 10.4 kg
TF8A	1/2 Pint - 237 ml	Brush Top Can (Display Box)	12	13 lbs. - 5.9 kg
TF8C*	1/2 Pint - 237 ml	Brush Top Can	24	23 lbs. - 10.4 kg
TF8CA*	1/2 Pint - 237 ml	Brush Top Can (Display Box)	12	13 lbs. - 5.9 kg
TF16	Pint - 473 ml	Brush Top Can	12	22 lbs. - 10.0 kg
TF16C*	Pint - 473 ml	Brush Top Can	12	22 lbs. - 10.0 kg
TF32	Quart - .95 L	Brush Top Can	12	43 lbs. - 19.5 kg
TF32C*	Quart - .95 L	Brush Top Can	12	43 lbs. - 19.5 kg
TF5	5 Gallon - 18.9 L	Pail w/ Handle	1	66 lbs. - 29.9 kg
TF55	55 Gallon - 208 L	55 Gallon Drum	1	640 lbs. - 290.3 kg



White



pw-G/dwv/sw



pw-G/dwv/sw

*Bilingual Label: French and English. **Tubes Packed 12 Per Clear Plastic Tub. FlameGuard® is a registered trademark of Spears Manufacturing Company. Pallet Quantities for Thread Sealants: 1/4 Pint = 130 Cases, 1/2 Pint = 80 Cases, 1 Pint = 80 Cases, 1 Quart = 56 Cases, 1 Gallon = 45 Cases

THREAD SEALANTS, THREAD TAPE

CATEGORY 2

THREAD SEALANTS

TALON PTFE THREAD COMPOUND A triple lubricating, all purpose, non-seizing, VOC free, industrial grade thread sealing compound that provides Freedom from Leaks™ on all types of metal and plastic threaded connections. **TALON PTFE THREAD COMPOUND** contains graphite, ceramic microspheres, and virgin PTFE for optimal sealing. Meets International Fuel Gas Code 403.9.3 for Thread Joint Compounds. **Made in the U.S.A.**

STOCK CODE	SIZE	CONTAINER	ITEMS/CASE	CASE WEIGHT
TAL4	1/4 Pint - 118 ml	Brush Top Can	24	15 lbs. - 6.8 kg
TAL8	1/2 Pint - 237 ml	Brush Top Can	24	24 lbs. - 10.9 kg
TAL8A	1/2 Pint - 237 ml	Brush Top Can (Display Box)	12	13 lbs. - 5.9 kg
TAL16	Pint - 473 ml	Brush Top Can	12	22 lbs. - 10.0 kg
TAL32	Quart - .95 L	Brush Top Can	12	42 lbs. - 19.1 kg
TAL5	5 Gallon - 18.9 L	Pail w/ Handle	1	65 lbs. - 29.5 kg
TAL55	55 Gallon - 208 L	55 Gallon Drum	1	640 lbs. - 290.3 kg



pw-G/dw/sw

POWER SEAL PLUS Non-drying, arctic blue PTFE based thread sealing compound. Specially formulated for the Fire Sprinkler industry for use on all metal threaded connections, FlowGuard Gold®, BlazeMaster®, and Corzan® CPVC pipe and fittings. Meets Federal Specification TT-S-1732. **Made in the U.S.A.**

POW32	Quart - .95 L	Plastic Container w/ Twist Top Lid	12	42 lbs. - 19.1 kg
POW32B	Quart - .95 L	Brush Top Can	12	44 lbs. - 20.0 kg
POW5	5 Gallon - 18.9 L	Pail w/ Handle	1	73 lbs. - 33.1 kg
POW55	55 Gallon - 208 L	55 Gallon Drum	1	740 lbs. - 335.7 kg



ANTI-SEIZE

TALON COPPER ANTI-SEIZE Lubricant and thread sealant. Lead free, non-seizing, copper based conforms to MIL-A-907E Specification. Service Rating to 1800°F (982°C). **Made in the U.S.A.**

CU8	10 oz. - .284 kg	Brush Top Can	24	20 lbs. - 9.1 kg
CU8A	10 oz. - .284 kg	Brush Top Can (Display Box)	12	10 lbs. - 4.5 kg
CU16	1 lb. - .454 kg	Brush Top Can	12	19 lbs. - 8.6 kg
CU32	2-1/2 lbs. - 1.13 kg	Brush Top Can	12	36 lbs. - 16.3 kg
CU5	50 lbs. - 22.68 kg	Pail w/ Handle	1	54 lbs. - 24.5 kg
CU55	500 lbs. - 226.8 kg	55 Gallon Drum	1	540 lbs. - 244.9 kg



TALON NICKEL ANTI-SEIZE Lubricant and thread sealant. Lead free, non-seizing, nickel based exceeds MIL-A-907E Specification. Service Rating to 2600°F (1427°C). **Made in the U.S.A.**

NI8	8 oz. - .227 kg	Brush Top Can	12	10 lbs. - 4.5 kg
NI16	1 lb. - .454 kg	Brush Top Can	12	19 lbs. - 8.6 kg



THREAD SEALANT COMPATIBILITY CHART

	Acids, concentrated	Acids, dilute	Air, compressed	Alcohols, all	Aliphatic Solvents	Ammonia, gaseous	Ammonia, liquid	Aromatic Solvents	Caustic, concentrated	Caustic, dilute	Chlorinated Solvents	Cutting Oils (low aromatic)	Diesel Fuel Oil	Ethylene Glycol (anti-freeze)	Fatty Acids, liquid	Gasohol (unleaded 10% alcohol)	Gasoline	Glycerine	Heating Oils	Helium, gaseous	Hydraulic Fluids, water/glycol	Hydraulic Oils	Hydrogen, gaseous	Inert Gases	Jet Fuel (JP3, 4, 5, 6, 8)	Kerosene	Ketones	Liquidified Petroleum Gases	Mineral Oils	Natural Gas	Nitrogen, gaseous	Oxygen, gaseous	Petroleum Solvents	Refrigerants	Refrigeration Oil	Soap, liquid	Steam	Vegetable Oils	Water (hot or cold)										
TYTE UNYTE	R	R																																															
STEEL UNYTE	R	R			R	R	R			R		R	R																																				
T-U TYPE 555	R	R			R	R	R			R		R	R																																				
BLUE MAGIC	R	R			R	R	R			R		R	R																																				
SELECT-UNYTE	R	R			R	R	R			R		R	R																																				
TALON PTFE THREAD COMPOUND	R	R			R	R	R			R		R	R																																				
POWER SEAL PLUS																																																	
TALON COPPER ANTI-SEIZE																																																	
TALON NICKEL ANTI-SEIZE																																																	
PTFE TAPES	R	R	R	R	R	R	R	R	R	R	R	R	R	R	R	R	R	R	R	R	R	R	R	R	R	R	R	R	R	R	R	R	R	R	R	R	R	R	R	R	R	R	R	R	R	R	R	R	R

R=Recommended

Pallet Quantities for Thread Sealants: 1/4 Pint = 130 Cases, 1/2 Pint = 80 Cases, 1 Pint = 80 Cases, 1 Quart = 56 Cases, 1 Gallon = 45 Cases. FBC™ System Compatible indicates that this product has been tested and is monitored on an ongoing basis, to assure its chemical compatibility with FlowGuard Gold®, BlazeMaster® and Corzan® piping systems and products made with TempRite® Technology. The FBC System Compatible Logo, FBC™, FlowGuard Gold®, BlazeMaster®, Corzan® and TempRite® are trademarks of Lubrizol Advanced Materials, Inc. or its affiliates.

CATEGORY 2

THREAD SEALANT TAPE



TALON PROFESSIONAL HIGH DENSITY GRAY PTFE TAPE 3.5 Mil Thick, 0.8g/cm³ high density, 100% elongation. Excellent for natural and LP gas. Meets MIL-T-27730A. Meets International Fuel Gas Code 403.9.3 for Thread Joint Compounds. Packaged in a point of purchase display box.

STOCK CODE	SIZE	CONTAINER	ITEMS/CASE	CASE WEIGHT
TL1429	1/2" x 1429" - 1.27 cm x 36.3 m	Plastic Spool	45	8 lbs. - 3.6 kg
TLW1429	3/4" x 1429" - 1.9 cm x 36.3 m	Plastic Spool	27	6 lbs. - 2.7 kg
TLX1429	1" x 1429" - 1.9 cm x 36.3 m	Plastic Spool	27	6 lbs. - 2.7 kg



TALON YELLOW GAS LINE PTFE TAPE 3.5 Mil Thick, 0.8g/cm³ high density, 100% elongation. Excellent for natural and LP gas. Meets MIL-T-27730A. Meets International Fuel Gas Code 403.9.3 for Thread Joint Compounds. Packaged in a point of purchase display box.

TGT1429	1/2" x 1429" - 1.27 cm x 36.3 m	Plastic Spool	45	8 lbs. - 3.6 kg
TGTW1429	3/4" x 1429" - 1.9 cm x 36.3 m	Plastic Spool	27	6 lbs. - 2.7 kg



TAPE-UNYTE® HIGH DENSITY WHITE PTFE TAPE PTFE pipe joint compound in tape form. Packed on a spool with cover. 3.5 mil thick, 0.9g/cm³ high density. Meets MIL-T-27730A. FDA approved. Meets International Fuel Gas Code 403.9.3 for Thread Joint Compounds. Packaged in a point of purchase display box. **Made in the U.S.A.**

F520	1/4" x 520" - .63 cm x 13.2 m	Plastic Spool	12	1 lb. - 0.5 kg
T260	1/2" x 260" - 1.27 cm x 6.6 m	Plastic Spool	12	1 lb. - 0.5 kg
T520	1/2" x 520" - 1.27 cm x 13.2 m	Plastic Spool	12	1 lb. - 0.5 kg
T1296	1/2" x 1296" - 1.27 cm x 32.9 m	Plastic Spool	12	2 lbs. - 0.9 kg
W260	3/4" x 260" - 1.9 cm x 6.6 m	Plastic Spool	12	1 lb. - 0.5 kg
W520	3/4" x 520" - 1.9 cm x 13.2 m	Plastic Spool	12	2 lbs. - 0.9 kg
X260	1" x 260" - 2.54 cm x 6.6 m	Plastic Spool	12	1 lb. - 0.5 kg



YELLOW GAS LINE PTFE TAPE 4 mil thick, 0.9g/cm³ high density. specifically formulated for use on natural, LP and synthetic gases. UL Approved. Meets or exceeds MIL-T-27730A. Meets International Fuel Gas Code 403.9.3 for Thread Joint Compounds. **Made in the U.S.A.**

GT260	1/2" x 260" - 1.27 cm x 6.6 m	Plastic Spool	144	8 lbs. - 3.6 kg
GT520	1/2" x 520" - 1.27 cm x 13.2 m	Plastic Spool	144	10 lbs. - 4.5 kg



STAINLESS STEEL PTFE TAPE Gray PTFE pipe joint compound in tape form. Formulated for use on all stainless steel fittings. Prevents galling, seizing, and corrosion. 4 mil thick, 1.2g/cm³ ultra-high density. Exceeds MIL Spec T-27730A. Meets International Fuel Gas Code 403.9.3 for Thread Joint Compounds. **Made in the U.S.A.**

SST260	1/2" x 260" - 1.27 cm x 6.6 m	Plastic Spool	12	1 lb. - 0.5 kg
SSTW260	3/4" x 260" - 1.9 cm x 6.6 m	Plastic Spool	12	1 lb. - 0.5 kg



QUALITY WHITE MEDIUM DENSITY PTFE TAPE Pipe joint compound in tape form. Packed on a spool with cover. 3.5 mil thick, 0.38g/cm³ density. Meets MIL-T-27730A. Meets International Fuel Gas Code 403.9.3 for Thread Joint Compounds.

S260	1/2" x 260" - 1.27 cm x 6.6 m	Plastic Spool	100	3 lbs. - 1.4 kg
S520	1/2" x 520" - 1.27 cm x 13.2 m	Plastic Spool	100	3 lbs. - 1.4 kg
S1296	1/2" x 1296" - 1.27 cm x 32.9 m	Plastic Spool	50	3 lbs. - 1.4 kg
SW260	3/4" x 260" - 1.9 cm x 6.6 m	Plastic Spool	70	3 lbs. - 1.4 kg
SW520	3/4" x 520" - 1.9 cm x 13.2 m	Plastic Spool	70	3 lbs. - 1.4 kg
SW1296	3/4" x 1296" - 1.9 cm x 32.9 m	Plastic Spool	150	15 lbs. - 6.8 kg
SX520	1" x 520" - 2.54 cm x 13.2 m	Plastic Spool	50	3 lbs. - 1.4 kg

CATEGORY 3

PUTTY



TALON SUPER SOFT STAINLESS PLUMBER'S PUTTY Never hardens. Cream color. Meets Federal Specifications TT-P-1536A. **Made in the U.S.A.**

MT1	14 oz. - .397 kg	Plastic Tub	24	25 lbs. - 11.3 kg
MT3	3 lbs. - 1.38 kg	Plastic Tub	6	19 lbs. - 8.6 kg
MT5	5 lbs. - 2.26 kg	Plastic Tub	6	32 lbs. - 14.5 kg
MT15	15 lbs. - 6.90 kg	Pail w/ Handle	4	67 lbs. - 30.4 kg



TALON EPOXY FOR PLASTIC A hand-mixable, fast-setting epoxy putty that forms a durable bond to most major plastic types. After mixing it forms a polymer compound that can be molded, wrapped around, or used to build up and repair just about anything made from rigid or semi-flexible plastic. Packaged in a point of purchase display box. Meets ASTM D-4236. **Made in the U.S.A.**

EPP4	4 oz. - 113.4 kg 7" (18 cm) Long Sticks	Plastic Tube (2 Display Cartons)	24	11 lbs. - 5.0 kg
------	--	-------------------------------------	----	------------------



TALON EPOXY FOR STEEL A hand-mixable, steel-reinforced, non-rusting fast-setting epoxy putty that quickly repairs or rebuilds anything made of steel. After mixing it forms a polymer compound that can be molded, wrapped around, build up, patch and repair steel components. Packaged in a point of purchase display box. **Made in the U.S.A.**

EPS4	4 oz. - 113.4 kg 7" (18 cm) Long Sticks	Plastic Tube (2 Display Cartons)	24	11 lbs. - 5.0 kg
------	--	-------------------------------------	----	------------------

REPAIR CEMENTS & COATINGS

"BLACK FLASH" FLASHING CEMENT COMPOUND All weather. Never hardens. Meets Federal Specifications SS-C-153. **Made in the U.S.A.**

STOCK CODE	SIZE	CONTAINER	ITEMS/CASE	CASE WEIGHT
BFC	1/10 gal - .37 L	Cartridge	12	11 lbs. - 5.0 kg
BF32	Quart - .95 L	Can	12	33 lbs. - 15.0 kg
BF1	Gallon - 3.785 L	Can w/ Handle	4	40 lbs. - 18.1 kg



"BLACK DRAGON" BLACK GILSONITE ASPHALT PAINT A quick drying, high gloss asphalt enamel paint. Provides excellent corrosion protection for all types of metal surfaces including pipe. Offers one coat coverage with full resistance to water, acids, alkalis, electrolysis, and natural elements. **Made in the U.S.A.**

BD1	Gallon - 3.785 L	Can w/ Handle	4	32 lbs. - 14.5 kg
BD5	5 Gallon - 18.9 L	Pail w/ Handle	1	41 lbs. - 18.6 kg
BD55	55 Gallon - 208 L	Drum	1	550 lbs. - 249.5 kg



"BLACK SEAL" ACRYLIC CONCRETE SEALER AND DAMP-PROOF COATING A single component waterborne coating ideal for seamless waterproofing applications above or below-grade. Its quick drying damp-proof coating with high solids is ideal for most all concrete structures. Excellent for interior and exterior use to create a damp-proof coating. Suitable as a topcoat on properly primed metals. **Made in the U.S.A.**

BSB5	5 Gallon - 18.9 L	Pail w/ Handle	1	49 lbs. - 22.5 kg
BSB55	55 Gallon - 208 L	Drum	1	542 lbs. - 247.5 kg



TALON DIRECT TO METAL (DTM) ENAMEL A premium, industrial grade, alkyd enamel specially formulated for use on all types of metal surfaces. Its special rust-inhibiting formula creates an armor coating against the elements. **TALON DTM ENAMEL** coatings resist mild solvents, oils, mild chemicals and salt water. **Made in the U.S.A.**

DTMBLU1	Gallon - 3.785 L	Can w/ Handle	2	20 lbs. - 9.1 kg
DTMGRN1	Gallon - 3.785 L	Can w/ Handle	2	20 lbs. - 9.1 kg
DTMGRY1	Gallon - 3.785 L	Can w/ Handle	2	20 lbs. - 9.1 kg
DTMORG1	Gallon - 3.785 L	Can w/ Handle	2	20 lbs. - 9.1 kg
DTMPUR1	Gallon - 3.785 L	Can w/ Handle	2	20 lbs. - 9.1 kg
DTMRED1	Gallon - 3.785 L	Can w/ Handle	2	20 lbs. - 9.1 kg
DTMWHT1	Gallon - 3.785 L	Can w/ Handle	2	20 lbs. - 9.1 kg
DTMYEL1	Gallon - 3.785 L	Can w/ Handle	2	20 lbs. - 9.1 kg



TALON RED OXIDE METAL PRIMER A premium, industrial grade, alkyd enamel specially formulated for use on all types of metal surfaces. Its special rust-inhibiting formula creates an armor coating against the elements. **Made in the U.S.A.**

R01	Gallon - 3.785 L	Boxed	4	19 lbs. - 8.6 kg
R05	5 Gallon - 18.9 L	Boxed	1	57 lbs. - 25.85 kg



CUTTING OILS

TALON LIGHT OIL Super-supreme sulphur base cutting and threading oil for use with all pipe threading machinery. **Made in the U.S.A.**

WL32	Quart - .95 L	Plastic Jug w/ Spout	12	27 lbs. - 12.2 kg
WL1	Gallon - 3.785 L	Plastic Jug w/ Spout	6	48 lbs. - 21.8 kg
WL5	5 Gallon - 18.9 L	Pail w/ Handle	1	39 lbs. - 17.7 kg
WL55	55 Gallon - 208 L	55 Gallon Drum	1	454 lbs. - 205.9 kg



TALON DARK OIL Super-supreme sulphur base cutting and threading oil for use with all pipe threading machinery. **Made in the U.S.A.**

WD32	Quart - .95 L	Plastic Jug w/ Spout	12	27 lbs. - 12.2 kg
WD1	Gallon - 3.785 L	Plastic Jug w/ Spout	6	48 lbs. - 21.8 kg
WD5	5 Gallon - 18.9 L	Pail w/ Handle	1	39 lbs. - 17.7 kg
WD55	55 Gallon - 208 L	55 Gallon Drum	1	454 lbs. - 205.9 kg



CATEGORY 4

RED DEVIL® PRODUCTS



RED DEVIL® KITCHEN & BATH with STAIN BLOCK™

RED DEVIL® KITCHEN & BATH has a high gloss finish and is specially formulated to resist the toughest stains. This advanced sealant can be painted with latex and oil-based paints, and cleans up with water. Cured bead is mold and mildew resistant.

STOCK CODE	SIZE	CONTAINER	ITEMS/CASE	CASE WEIGHT
0755 (white)	5.5 fl. oz. - 163 ml	Plastic Tube	12	5 lbs. - 1.9 kg
0750 (white)	10.1 fl. oz. - 300 ml	Cartridge	12	10 lbs. - 3.7 kg
0765 (clear)	5.5 fl. oz. - 163 ml	Plastic Tube	12	5 lbs. - 1.9 kg
075522 (biscuit)	5.5 fl. oz. - 163 ml	Plastic Tube	12	5 lbs. - 1.9 kg

RED DEVIL® LIFETIME® ULTRA 230 PREMIUM ACRYLIC LATEX SEALANT

LIFETIME® ULTRA 230 is a high performance, multi-purpose sealant formulated to last a lifetime. This unique formulation provides the maximum level of durability on a variety of substrates indoors or outdoors. It offers excellent paintability and includes HomeShield™ Antimicrobial Protection to ensure against the worst types of mold and mildew.

0770 (white)	10.1 fl. oz. - 300 ml	Cartridge	12	12 lbs. - 4.5 kg
--------------	-----------------------	-----------	----	------------------

RED DEVIL® ARCHITECTURAL GRADE RTV 100% SILICONE

RED DEVIL® 100% SILICONE SEALANT is a multi-purpose sealant that provides a long-lasting weather-resistant seal to glass, metal, plastic, and ceramic surfaces. Mildew resistant when cured. No crack, shrink or peel. FDA approved. Interior/Exterior.

0810 (white)	2.8 fl. oz. - 300 ml	Plastic Tube	12	3 lbs. - 1.1 kg
0820 (clear)	2.8 fl. oz. - 300 ml	Plastic Tube	12	3 lbs. - 1.1 kg



RD PRO® INDUSTRIAL GRADE 100% RTV SILICONE SEALANT

RD PRO® INDUSTRIAL GRADE 100% RTV SILICONE SEALANT is a high performance sealing and glazing compound that is ideal for use in most OEM and maintenance applications. 50 year warranty. NSF listed.

081601 (white)	10.1 fl. oz. - 300 ml	Cartridge	12	10 lbs. - 3.7 kg
082601 (clear)	10.1 fl. oz. - 300 ml	Cartridge	12	10 lbs. - 3.7 kg
081661 (black)	10.1 fl. oz. - 300 ml	Cartridge	12	10 lbs. - 3.7 kg

Meets or exceeds the requirements of TT-S-00230C, TT-S-001543A, C.G.S.B. 19C9-9, Din 18540 Part 2, Mil. Spec 46106A, CEBTP 432.65 140-2, ASTM C920. USDA authorized for use in federally inspected meat and poultry plants.

RD PRO® 100% HEAT RESISTANT RTV SILICONE SEALANT

RD PRO® 100% HEAT RESISTANT RTV SILICONE is formulated with iron oxide to resist extreme heat exposure. Withstands temperatures up to 600°F and can be used on industrial ovens, heating elements, boilers, and more. 50 year warranty. Solvent clean up.

080901 (red)	10.1 fl. oz. - 300 ml	Cartridge	12	9 lbs. - 3.4 kg
--------------	-----------------------	-----------	----	-----------------

Meets or exceeds the requirements of TT-S-00230C, TT-S-001543A, C.G.S.B. 19C9-9, Din 18540 Part 2, Mil. Spec 46106A, CEBTP 432.65 140-2, ASTM C920. USDA authorized for use in federally inspected meat and poultry plants.

RED DEVIL® FOAM & FILL® LARGE GAPS & CRACKS

FOAM & FILL® LARGE GAPS & CRACKS is a triple expanding polyurethane sealant that is quick and easy to use. It expands to fill large holes, cracks, gaps and voids around windows, doors, pipes, outlets, vents and foundations. This insulating closed foam forms an airtight, water-proof bond and seals out drafts, moisture and pests. Indoor / Outdoor.

0909	12 fl. oz. - 340 g	Aerosol Can	12	12 lbs. - 4.5 kg
------	--------------------	-------------	----	------------------

RED DEVIL® FOAM & FILL® FIRE BLOCK POLYURETHANE FOAM

FOAM & FILL® FIRE BLOCK is a ready to use polyurethane expanding foam for filling, insulating and sealing gaps, cracks and openings in buildings' interior and exterior. It inhibits the passage of fire through residential utility penetrations and is excellent in sealing against gas, smoke and energy loss.

0915	12 fl. oz. - 340 g	Aerosol Can	12	12 lbs. - 4.5 kg
------	--------------------	-------------	----	------------------



CAULKING GUNS, ABRASIVE CLOTHS & FITTING BRUSHES

CATEGORY 5

CAULKING GUNS

STANDARD RATCHET CAULKING GUN This standard ratchet type caulking gun is recommended for medium and light consistency caulks, sealants and adhesives. The sturdy steel construction will ensure long lasting use.

STOCK CODE	SIZE	CONTAINER	ITEMS/CASE	CASE WEIGHT
#48	Standard	Boxed	6	7 lbs. - 3.2 kg

PROFESSIONAL RATCHET CAULKING GUN Superior smooth rod frame caulkers are uniquely designed for professionals to develop a powerful thrust ratio, making the extrusion of stiff caulks and sealants easy and comfortable. Gun features three extra built-in tool functions: seal puncture tool, spout cutter and ladder hook. **Made in the U.S.A.**

#56	Standard	Boxed	6	9 lbs. - 4.1 kg
-----	----------	-------	---	-----------------



ABRASIVE CLOTHS

BROWN SAND CLOTH 120J waterproof, brown abrasive cloth for cleaning copper pipe.

JA05	1-1/2" x 5 yd - 3.81 cm x 4.54 m	Boxed	50	15 lbs. - 6.8 kg
JA05A	1-1/2" x 5 yd - 3.81 cm x 4.54 m	Boxed	24	8 lbs. - 3.6 kg
JA010	1-1/2" x 10 yd - 3.81 cm x 9.08 m	Boxed	50	26 lbs. - 11.8 kg
JA010A	1-1/2" x 10 yd - 3.81 cm x 9.08 m	Boxed	24	13 lbs. - 5.9 kg
JA025	1-1/2" x 25 yd - 3.81 cm x 22.7 m	Boxed	20	26 lbs. - 11.8 kg
JA025A	1-1/2" x 25 yd - 3.81 cm x 22.7 m	Boxed	12	15 lbs. - 6.8 kg



BLUE SAND CLOTH 120J waterproof, blue abrasive cloth for cleaning copper pipe. 100% jean cloth backing.

WP5	1-1/2" x 5 yd - 3.81 cm x 4.54 m	Boxed	50	14 lbs. - 6.4 kg
WP10	1-1/2" x 10 yd - 3.81 cm x 9.08 m	Boxed	50	24 lbs. - 10.9 kg
WP10A	1-1/2" x 10 yd - 3.81 cm x 9.08 m	Boxed	24	14 lbs. - 6.4 kg
WP25	1-1/2" x 25 yd - 3.81 cm x 22.7 m	Boxed	20	22 lbs. - 10.0 kg
WP25A	1-1/2" x 25 yd - 3.81 cm x 22.7 m	Boxed	12	16 lbs. - 7.3 kg



OPEN MESH CLOTH Nylon open mesh abrasive cloth for cleaning copper pipe. Waterproof and reusable.

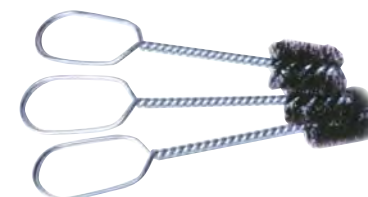
OM5	1-1/2" x 5 yd - 3.81 cm x 4.54 m	Boxed	50	14 lbs. - 6.4 kg
OM5A	1-1/2" x 5 yd - 3.81 cm x 4.54 m	Boxed	24	7 lbs. - 3.2 kg
OM10	1-1/2" x 10 yd - 3.81 cm x 9.08 m	Boxed	50	23 lbs. - 10.4 kg
OM10A	1-1/2" x 10 yd - 3.81 cm x 9.08 m	Boxed	24	11 lbs. - 5.0 kg
OM25	1-1/2" x 25 yd - 3.81 cm x 22.7 m	Boxed	20	21 lbs. - 9.5 kg
OM25A	1-1/2" x 25 yd - 3.81 cm x 22.7 m	Boxed	12	14 lbs. - 6.4 kg



FITTING BRUSHES

WIRE HANDLE PLUMBING COPPER FITTING BRUSHES High carbon steel, reusable copper cleaning brushes with wire handle. Nominal I.D. sizes. **Made in the U.S.A.**

CF18	1/8" ID - .32 cm ID	Boxed	12	1 lb. - 0.5 kg
CF25	1/4" ID - .63 cm ID	Boxed	12	1 lb. - 0.5 kg
CF38	3/8" ID - .95 cm ID	Boxed	12	1 lb. - 0.5 kg
CF5	1/2" ID - 1.27 cm ID	Boxed	12	1 lb. - 0.5 kg
CF58	5/8" ID - 1.58 cm ID	Boxed	12	1 lb. - 0.5 kg
CF75	3/4" ID - 1.91 cm ID	Boxed	12	1 lb. - 0.5 kg
CF1	1" ID - 2.54 cm ID	Boxed	12	1 lb. - 0.5 kg
CF125	1-1/4" ID - 3.18 cm ID	Boxed	6	1 lb. - 0.5 kg
CF15	1-1/2" ID - 3.81 cm ID	Boxed	6	1 lb. - 0.5 kg
CF2	2" ID - 5.08 cm ID	Boxed	6	1 lb. - 0.5 kg
CF250	2-1/2" ID - 6.35 cm ID	Boxed	6	1 lb. - 0.5 kg



SOLID HANDLE PLUMBING COPPER FITTING BRUSHES High carbon steel, reusable copper cleaning brushes with solid plastic handle. Cleans fast! Nominal I.D. sizes. **Made in the U.S.A.**

CP18	1/8" ID - .32 cm ID	Boxed	12	1 lb. - 0.5 kg
CP25	1/4" ID - .63 cm ID	Boxed	12	1 lb. - 0.5 kg
CP38	3/8" ID - .95 cm ID	Boxed	12	1 lb. - 0.5 kg
CP5	1/2" ID - 1.27 cm ID	Boxed	12	1 lb. - 0.5 kg
CP58	5/8" ID - 1.58 cm ID	Boxed	12	1 lb. - 0.5 kg
CP75	3/4" ID - 1.91 cm ID	Boxed	12	1 lb. - 0.5 kg
CP1	1" ID - 2.54 cm ID	Boxed	12	1 lb. - 0.5 kg
CP125	1-1/4" ID - 3.18 cm ID	Boxed	6	1 lb. - 0.5 kg
CP15	1-1/2" ID - 3.81 cm ID	Boxed	6	1 lb. - 0.5 kg
CP2	2" ID - 5.08 cm ID	Boxed	6	1 lb. - 0.5 kg



CATEGORY 5

FLUX & GREASE



White



Amber



White

TALON WATER SOLUBLE PASTE FLUX Specially formulated, creamy, white, water flushable paste flux that holds its shape and will not slump until heated above 122°F (50°C). Suitable for use on all types of tin solder and their alloys. Meets ASTM B-813. **Made in the U.S.A.**

STOCK CODE	SIZE	CONTAINER	ITEMS/CASE	CASE WEIGHT
TWF2	2 oz. - 57 g	Plastic Jar	36	8 lbs. - 3.6 kg
TWF4	4 oz. - 113.4 g	Plastic Jar	24	9 lbs. - 4.1 kg
TWF8BT	8 oz. - 226.8 g	Plastic Jar w/ Brush	24	17 lbs. - 7.7 kg
TWF1	1 lb. - 454 g	Plastic Jar	24	31 lbs. - 14.1 kg

E-Z TURN FAUCET & VALVE HEAT PROOF GREASE Waterproof, high temperature up to 350°F (176°C) for lubricating valve stems of faucets, valves, ballcocks, plungers, packings and washers. Prevents sticking and rust. **Made in the U.S.A.**

HPG2	2 oz. - 56.7 g	Plastic Container	24	5 lbs. - 2.3 kg
HPG2C*	2 oz. - 56.7 g	Plastic Container	24	5 lbs. - 2.3 kg

MULTI-PURPOSE SILICONE GREASE Moisture resistant, non-curing paste. Wide temperature range from -70°F (57°C) to 400°F (204°C). Excellent for lubricating valve stems of faucets, valves, ballcocks, plungers, packings, washers, food equipment, hydrants, backflows, and O-rings. Also recommended for waterproofing electrical and mechanical devices. Made from Food Grade Silicone. Meets: FDA-CFR-21-178.3570 and SAE-AS-8660. **Made in the U.S.A.**

SG2	2 oz. - 56.7 g	Plastic Container	24	5 lbs. - 2.3 kg
-----	----------------	-------------------	----	-----------------

CATEGORY 6

PIPE GASKET LUBRICANTS



Blue



Green



Golden Brown

BLUE LUBE® POLYMER-BASED PIPE GASKET LUBE A water-soluble lubricant for all metal or plastic gasketed pipe including Victaulic** type fittings. Works on wet or dry surfaces. Safe for potable water systems. Odorless and cleans up easily. Nontoxic, noncorrosive, nonflammable. **Made in the U.S.A.**

GLP4	1/4 Pint - 118 ml	Plastic Jar	24	8 lbs. - 3.6 kg
GLP16	Pint - 473 ml	Plastic Container	24	30 lbs. - 13.6 kg
GLP32	Quart - .95 L	Plastic Container	12	28 lbs. - 12.7 kg
GLP1	Gallon - 3.785 L	Pail w/ Handle	4	37 lbs. - 16.8 kg
GLP5	5 Gallon - 18.9 L	Pail w/ Handle	1	45 lbs. - 20.4 kg
GLP55	55 Gallon - 208 L	55 Gallon Drum	1	500 lbs. - 226.8 kg

"PIPE SLIME" PIPE GASKET LUBE An emulsified polymer based lubricant that is specially formulated to prevent turbidity, taste, and/or odor problems in new water main installations. Great for use with mechanical couplings. All weather formula is excellent for low-temperature applications. Temperature range use: 0°F (-18°C) to 150°F (66°C). **Made in the U.S.A.**

SLIME16	Pint - 473 ml	Plastic Container	24	30 lbs. - 13.6 kg
SLIME32	Quart - .95 L	Plastic Container w/ Twist Top Lid	12	28 lbs. - 12.7 kg
SLIME1	Gallon - 3.785 L	Pail w/ Handle	4	37 lbs. - 16.8 kg
SLIME5	5 Gallon - 18.9 L	Pail w/ Handle	1	45 lbs. - 20.4 kg
SLIME55	55 Gallon - 208 L	55 Gallon Drum	1	500 lbs. - 226.8 kg

"QUICK SLIP" PLUS VEGETABLE OIL-BASED PIPE JOINT LUBRICANT A paste lubricant for all metal or plastic gasketed pipe including Victaulic** type fittings. Works on wet or dry surfaces. Safe for potable water systems. Nontoxic, noncorrosive, nonflammable. **Made in the U.S.A.**

QS32	Quart - .95 L	Plastic Container w/ Twist Top Lid	12	30 lbs. - 13.6 kg
QS1	Gallon - 3.785 L	Pail w/ Handle	4	34 lbs. - 15.4 kg
QS5	5 Gallon - 18.9 L	Pail w/ Handle	1	46 lbs. - 20.9 kg
QS55	55 Gallon - 208 L	55 Gallon Drum	1	480 lbs. - 217.7 kg

*Bilingual Label: French and English.

**Trademark of Victaulic Company. The pallet information can be last FBC™ System Compatible indicates that this product has been tested and is monitored on an ongoing basis, to assure its chemical compatibility with FlowGuard Gold®, BlazeMaster® and Corzan® piping systems and products made with TempRite® Technology. The FBC System Compatible Logo, FBC™, FlowGuard Gold®, BlazeMaster®, Corzan® and TempRite® are trademarks of Lubrizol Advanced Materials, Inc. or its affiliates.

Pallet Quantities for Blue Lube® Paste: 1 Pint = 40 Cases, 1 Quart = 40 Cases, 1 Gallon = 45 Cases, 5 Gallon = 32 Pails. Pallet Quantities for Pipe Slime and Quick Slip Plus: 1 Pint = 40 Cases, 1 Quart = 40 Cases, 1 Gallon = 45 Cases, 5 Gallon = 32 Pails

SYSTEM DESCALER, LIQUID TRAP PRIMER, WATERLESS URINAL TRAP SEALANT

CATEGORY 7

SYSTEM DESCALER

FLOW-AIDE SYSTEM DESCALER Quickly dissolves water scale, lime, rust and other water formed deposits, restoring efficiency to most appliances. Noncorrosive, nontoxic, fully biodegradable, safe to handle, Zero VOC. Certified to NSF/ANSI 60 for use as a cleaner in potable water systems.

Made in the U.S.A.

STOCK CODE	SIZE	CONTAINER	ITEMS/CASE	CASE WEIGHT
FLOW32	Quart - .95 L	Plastic Jug w/ Spout**	12	30 lbs. - 13.6 kg
FLOW32C*	Quart - .95 L	Plastic Jug w/ Spout**	12	30 lbs. - 13.6 kg
FLOW1	Gallon - 3.785 L	Plastic Jug w/ Spout**	6	57 lbs. - 25.9 kg
FLOW1C*	Gallon - 3.785 L	Plastic Jug w/ Spout**	6	57 lbs. - 25.9 kg
FLOW5	5 Gallon - 18.9 L	Pail w/ Handle	1	48 lbs. - 21.8 kg
FLOW55	55 Gallon - 208 L	55 Gallon Drum	1	518 lbs. - 235.0 kg
FLOW275	275 Gallon - 1041 L	Tote	1	2603 lbs. - 1180.7 kg

FLOW-AIDE SYSTEM DESCALER KIT

Whitlam's complete descaler kit includes: 1 - 3.5 Gallon Bucket, 1 - 725 GPH Pump
2 - Rubber Hoses, 1 - Quart FLOW-AIDE (FLOW32)

FLOW-KIT	3.5 Gallon Bucket	1	13 lbs. - 5.9 kg
FLOW-DISPLAY†	Contains: 16 each FLOW32, 6 each FLOW-KIT	1	115 lbs. - 52.2 kg
FLOW-KITC*	3.5 Gallon Bucket	1	13 lbs. - 5.9 kg
FLOW-DISPLAYC*†	Contains: 16 each FLOW32C*, 6 each FLOW-KITC*	1	115 lbs. - 52.2 kg

FLOW-AIDE COMMERCIAL GRADE SYSTEM DESCALER KIT

Whitlam's complete descaler kit includes: 1 - 5 Gallon Bucket, 1 - 1150 GPH Pump
2 - Rubber Hoses, 1 - Gallon FLOW-AIDE (FLOW1)

FLOW-COM5	5 Gallon Bucket	1	22 lbs. - 10.0 kg
FLOW-COMD†	Contains: 12 each FLOW32, 6 each FLOW1, 3 each FLOW-KIT, 2 each FLOW-COM5	1	173 lbs. - 78.5 kg

REPLACEMENT PUMPS FOR FLOW-AIDE SYSTEM DESCALER KITS Submersible, magnetic drive utility pump with 15 foot power cord.

#EZ-725	725 GPH	Boxed	1	4 lbs. - 1.8 kg
#EZ-1150	1150 GPH	Boxed	1	7 lbs. - 3.2 kg

REPLACEMENT HOSE FOR FLOW-AIDE SYSTEM DESCALER KIT Rubber hose with brass connectors.

Made in the U.S.A.

#501	60" - 1.5 m Two Female Ends	Boxed	1	1 lb. - 0.5 kg
------	--------------------------------	-------	---	----------------

LIQUID DRAIN TRAP PRIMER

TALON LIQUID DRAIN TRAP PRIMER Eliminates drain odors. For use in shower drain traps, outdoor drain traps, basement drains, water heater drains, maintenance areas, floor traps, mop sink traps, residential bathrooms, kitchen sink traps, laundry room traps and HVAC condensation drain traps. Long lasting and biodegradable. Fresh lavender scent.

Made in the U.S.A.

TDTP32	Quart - .95 L	Plastic Bottle	12	27 lbs. - 12.2 kg
--------	---------------	----------------	----	-------------------

WATERLESS URINAL TRAP SEALANT

TALON WATERLESS URINAL TRAP SEALANT Eliminates urinal odor problems. Ready-to-use trap liquid sealant for use in waterless urinals. **Made in the U.S.A.**

TUTS32	Quart - .95 L	Plastic Bottle	12	27 lbs. - 12.2 kg
--------	---------------	----------------	----	-------------------



*Bilingual Label: French and English.

**Childproof caps

†Displays ship assembled

CATEGORY 7

DRAIN CLEANERS, DRAIN OPENERS & HAND CLEANERS

DRAIN OPENERS & DRAIN CLEANERS



TALON DRAIN OPENER* Non-acid flake drain opener for clearing grease, hair, soap, oils, and other organic matter from drains. Hot water activated. Works in less than 60 seconds. Will not harm chrome, polished brass or plastic. Safe for septic tanks. **Made in the U.S.A.**

For professional use only. Not for retail sale.

STOCK CODE	SIZE	CONTAINER	ITEMS/CASE	CASE WEIGHT
TDC1	1 lb. - 454 g	Plastic Container**	24	33 lbs. - 15.0 kg
TDC2	2 lbs. - 907 g	Plastic Container**	12	32 lbs. - 14.5 kg



NOW! H2SO4 DRAIN PIPE OPENER* A powerful sulfuric acid. This product is ideal for dissolving organic matter, melting heavy grease deposits and opening clogged drains. **Made in the U.S.A.**

Do not use in toilets. For professional use only. Not for retail sale.

NW32	Quart - .95 L	Plastic Jug w/ Spout**	12	50 lbs. - 22.7 kg
NW64	½ Gallon - 1.89 L	Plastic Jug w/ Spout**	6	47 lbs. - 21.3 kg



QUIK! HCL - RUST, LIME, CONCRETE and SCALE REMOVER* Removes rust, lime, concrete and scale from air conditioning equipment, refrigerator drains, water piping, boilers, water pump condensers, water sealed blowers, etc. Excellent for removing uretic salts in urinals. **Made in the U.S.A.**

Do not use in toilets. For professional use only. Not for retail sale.

QK32	Quart - .95 L	Plastic Jug w/ Spout**	12	34 lbs. - 15.4 kg
QK1	Gallon - 3.785 L	Plastic Jug w/ Spout**	4	43 lbs. - 19.5 kg



TALON URINAL CLEANER AND DESCALER* Dissolves and removes uric acid deposits from urinal drains and traps. Designed to keep urinals open and free flowing, eliminating bothersome uric acid odors. **Made in the U.S.A.**

TUBC32	Quart - .95 L	Plastic Bottle	12	34 lbs. - 15.4 kg
TUBC1	Gallon - 3.785 L	Plastic Jug	4	43 lbs. - 19.5 kg



HAND CLEANERS

TALON 9" x 12" TOWELS 70 count roll of wiping towels for removal of dirt, paint and adhesives. Works great on removing: plumbing cement, urethane foam, pond dye, poxy, silicone sealant, acrylic spray paint, varnish, rubber cement and latex paint.

TFB80	9" x 12" 22.86 cm x 30.48 cm	Plastic Dispenser	6	15 lbs. - 6.8 kg
TFB80†	42-3/4" high 11-1/4" wide 10-3/4" deep 108.6 cm high 28.6 cm wide 27.3 cm deep	Plastic Dispenser (Display Tower)	20	50 lbs. - 22.7 kg



TALON HAND CLEANER Citrus lotion hand cleaner with lanolin and walnut scrubbers. Industrial strength. Removes grease, grime and dirt easily. **Made in the U.S.A.**

THC4	4 fl. oz. - 118 ml	Plastic Container	24	8 lbs. - 3.6 kg
THC16	16 fl. oz. - 473 ml	Plastic Container (Display Box)	12	16 lbs. - 7.3 kg



GLUE-WASH PUMICE HAND CLEANER Lanolized hand cleaner. Safely removes PVC, ABS, CPVC, foam, vinyl cements, silicone sealants and paints from skin. **Made in the U.S.A.**

GWP4	4 fl. oz. - 118 ml	Plastic Container	24	9 lbs. - 4.1 kg
GWP16	16 fl. oz. - 473 ml	Plastic Container (Display Box)	12	16 lbs. - 7.3 kg

* D.O.T. Classified Shipping Items. See Page 36. **Childproof Caps.
† Display ships assembled.

FLANGE BOLT SETS

CATEGORY 8

FLANGE BOLTS, HEX NUTS & WASHERS

SOLID BRASS TOILET FLANGE BOLT SETS [POLY BAGGED] Each bag contains 2 each solid brass flange bolts zinc plated open end acorn hex nuts and plated steel round washers.

STOCK CODE	SIZE	CONTAINER	ITEMS/CASE	CASE WEIGHT
FB101	1/4" x 2-1/4" - .6 cm x 5.7 cm	Bagged	50	5 lbs. - 2.3 kg
FB102	5/16" x 2-1/4" - .8 cm x 5.7 cm	Bagged	50	8 lbs. - 3.6 kg
FB103	1/4" x 3-1/2" - .6 cm x 8.9 cm	Bagged	50	7 lbs. - 3.2 kg



SOLID BRASS TOILET FLANGE BOLT SETS [POLY BAGGED] Each bag contains 2 each solid brass flange bolts, 4 each zinc plated open end acorn hex nuts and 4 each plated steel round washers.

FB101-D*	1/4" x 2-1/4" - .6 cm x 5.7 cm	Bagged	50	7 lbs. - 3.2 kg
FB102-D*	5/16" x 2-1/4" - .8 cm x 5.7 cm	Bagged	50	10 lbs. - 4.5 kg
FB103-D*	1/4" x 3-1/2" - .6 cm x 8.9 cm	Bagged	50	9 lbs. - 4.1 kg



SOLID BRASS TOILET FLANGE BOLT SETS [POLY BAGGED] Each bag contains 2 each solid brass flange bolts, zinc plated open end acorn hex nuts, plated steel round washers and plastic retainer washers.

FB101-R*	1/4" x 2-1/4" - .6 cm x 5.7 cm	Bagged	50	7 lbs. - 3.2 kg
FB102-R*	5/16" x 2-1/4" - .8 cm x 5.7 cm	Bagged	50	10 lbs. - 4.5 kg
FB103-R*	1/4" x 3-1/2" - .6 cm x 8.9 cm	Bagged	50	9 lbs. - 4.1 kg



BRASS PLATED STEEL TOILET FLANGE BOLT SETS [POLY BAGGED] Each bag contains 2 each brass plated steel flange bolts, plated steel open end acorn hex nuts and plated steel round washers.

FB300	1/4" x 2-1/4" - .6 cm x 5.7 cm	Bagged	50	6 lbs. - 2.7 kg
FB301	5/16" x 2-1/4" - .8 cm x 5.7 cm	Bagged	50	7 lbs. - 3.2 kg



BRASS PLATED STEEL TOILET FLANGE BOLT SETS [POLY BAGGED] Each bag contains 2 each brass plated steel flange bolts, 4 each plated steel open end acorn hex nuts and 4 each plated steel round washers.

FB301-D*	5/16" x 2-1/4" - .8 cm x 5.7 cm	Bagged	50	9 lbs. - 4.1 kg
----------	---------------------------------	--------	----	-----------------



BRASS PLATED STEEL TOILET FLANGE BOLT SETS [POLY BAGGED] Each bag contains 2 each brass plated steel flange bolts, plated steel open end acorn hex nuts, plated steel round washers and plastic retainer washers.

FB300-R*	1/4" x 2-1/4" - .6 cm x 5.7 cm	Bagged	50	8 lbs. - 3.6 kg
FB301-R*	5/16" x 2-1/4" - .8 cm x 5.7 cm	Bagged	50	9 lbs. - 4.1 kg



BREAK-A-WAY SOLID BRASS TOILET FLANGE BOLT SETS [POLY BAGGED] Each bag contains 2 each Break-A-Way solid brass flange bolts, zinc plated steel open end acorn hex nuts, plated steel round washers and plated steel oval washers.

BA100	1/4" x 2-1/4" - .6 cm x 5.7 cm	Bagged	50	6 lbs. - 2.7 kg
BA101	5/16" x 2-1/4" - .8 cm x 5.7 cm	Bagged	50	9 lbs. - 4.1 kg



BREAK-A-WAY SOLID BRASS TOILET FLANGE BOLT SETS [POLY BAGGED] Each bag contains 2 each Break-A-Way solid brass flange bolts, 2 each zinc plated steel open end acorn hex nuts, 4 each plated steel round washers and 4 each plated steel oval washers.

BA101-D*	5/16" x 2-1/4" - .8 cm x 5.7 cm	Bagged	50	11 lbs. - 5.0 kg
----------	---------------------------------	--------	----	------------------



BREAK-A-WAY SOLID BRASS TOILET FLANGE BOLT SETS [POLY BAGGED] Each bag contains 2 each Break-A-Way solid brass flange bolts, zinc plated steel open end acorn hex nuts, plated steel round washers, plated steel oval washers and plastic retainer washers.

BA100-R*	1/4" x 2-1/4" - .6 cm x 5.7 cm	Bagged	50	8 lbs. - 3.6 kg
BA101-R*	5/16" x 2-1/4" - .8 cm x 5.7 cm	Bagged	50	11 lbs. - 5.0 kg



BREAK-A-WAY SOLID BRASS TOILET FLANGE BOLT SETS WITH BRASS CAPTIVE ROUND WASHER [POLY BAGGED] Each bag contains 2 each solid brass Break-A-Way flange bolts with brass captive round washer, solid brass round washers and 9/16" (1.45 cm) solid brass open end acorn hex nuts. **Made in the U.S.A.**

BA400	1/4" x 2-1/4" - .6 cm x 5.7 cm	Bagged	50	6 lbs. - 2.7 kg
BA401	5/16" x 2-1/4" - .8 cm x 5.7 cm	Bagged	50	9 lbs. - 4.1 kg



*WITH DOUBLE NUT AND DOUBLE WASHER. ALSO AVAILABLE WITH 2 ROUND PLASTIC RETAINER WASHERS IN PLACE OF DOUBLE NUT AND DOUBLE WASHER, AT NO ADDITIONAL COST. REPLACE "D" WITH "R" WHEN ORDERING SETS WITH RETAINER WASHERS.



REGULAR WAX RING Full size wax ring. Fits 3" (7.62 cm) and 4" (10.16 cm) drains. Meets U.S. Federal Specification TT-P-1536A. Fits all standard drains.

STOCK CODE	SIZE	CONTAINER	ITEMS/CASE	CASE WEIGHT
S1WR	Regular Wax Ring	Boxed	48	23 lbs. - 10.4 kg



FLANGED WAX RING Extra long flange is excellent for built-up floors. Fits 3" (7.62 cm) and 4" (10.16 cm) drains. Meets U.S. Federal Specification TT-P-1536A. Fits all standard drains.

S1WS	Flanged Wax Ring	Boxed	24	15 lbs. - 6.8 kg
------	------------------	-------	----	------------------



FLEX-O-SEAL JUMBO REGULAR WAX RING Extra thick wax ring. Jumbo bowl setting wax rings fit 3" (7.62 cm) and 4" (10.16 cm) drains. 40% more wax than regular ring. Saves labor time on installations and makes for a more positive seal.

FOS1RJ	Jumbo Regular Wax Ring	Boxed	24	14 lbs. - 6.4 kg
--------	------------------------	-------	----	------------------



FLEX-O-SEAL JUMBO FLANGED WAX RING Extra thick wax with extra long flange. Jumbo bowl setting wax rings fit 3" (7.62 cm) and 4" (10.16 cm) drains. 40% more wax than regular ring. Saves labor time on installations and makes for a more positive seal.

FOS1SJ	Jumbo Flanged Wax Ring	Boxed	24	14 lbs. - 6.4 kg
--------	------------------------	-------	----	------------------



FLEX-O-SEAL REGULAR WAX RING WITH BRASS BOLT KIT FOS1RB contains: 1 each S1WR with 1 each FB101 [poly bagged 2 each 1/4" x 2-1/4" solid brass flange bolts, brass plated open end acorn hex nuts and plated steel round washers]. FOS1RB-D contains: 1 each S1WR with 1 each FB101-D [poly bagged 2 each 1/4" x 2-1/4" solid brass flange bolts, 4 each brass plated open end acorn hex nuts and 4 each plated steel round washers].

FOS1RB	Regular with 1/4" x 2-1/4" Bolt Kit	Boxed	48	26 lbs. - 11.8 kg
FOS1RB-D*	Regular with 1/4" x 2-1/4" Bolt Kit (Double Nut/Double Washer)	Boxed	48	29 lbs. - 13.2 kg



FLEX-O-SEAL FLANGED WAX RING WITH BRASS BOLT KIT FOS1SJB-D contains: 1 each S1WS with 1 each FB103-D [poly bagged 2 each 1/4" x 3-1/2" solid brass flange bolts, 4 each brass plated open end acorn hex nuts and 4 each plated steel round washers].

FOS1SJB-D	Jumbo Flanged with 1/4" x 3-1/2" Bolt Kit (Double Nut/Double Washer)	Boxed	24	20 lbs. - 9.1 kg
-----------	---	-------	----	------------------



FLEX-O-SEAL REGULAR WAX RING W/BRASS PLATED DOUBLE NUT/DOUBLE WASHER BOLT KIT FOS1RP-D contains: 1 each S1WR, 1 each FB300-D [poly bagged 2 each brass plated steel flange bolts, 4 each plated steel open end acorn hex nuts and 4 each plated steel round washers].

FOS1RP-D*	Regular with 1/4" x 2-1/4" Bolt Kit (Double Nut/Double Washer)	Boxed	48	31 lbs. - 14.1 kg
-----------	---	-------	----	-------------------



Pallet Quantities for Wax Rings: S1WR = 72 Cases, S1WS = 84 Cases.

*WITH DOUBLE NUT AND DOUBLE WASHER. ALSO AVAILABLE WITH 2 ROUND PLASTIC RETAINER WASHERS IN PLACE OF DOUBLE NUT AND DOUBLE WASHER, AT NO ADDITIONAL COST. REPLACE "D" WITH "R" WHEN ORDERING SETS WITH RETAINER WASHERS.

FLEX-O-SEAL FLANGED WAX RING W/BRASS PLATED DOUBLE NUT/DOUBLE WASHER BOLT KIT

Economical prepackaged kits with extra nuts/washers. FOS1SP-D contains: 1 each S1WS with 1 each contains: 1 each FB300-D [poly bagged 2 each brass plated steel flange bolts, 4 each plated steel open end acorn hex nuts and 4 each plated steel round washers].

STOCK CODE	SIZE	CONTAINER	ITEMS/CASE	CASE WEIGHT
FOS1SP-D*	Flanged with 1/4" x 2-1/4" Bolt Kit (Double Nut/Double Washer)	Boxed	48	18 lbs. - 8.2 kg



FLEX-O-SEAL REGULAR WAX RING WITH URETHANE Full size wax ring. This is a urethane gasket made of tough, flexible urethane foam, which is completely impregnated with wax.

FOS1RU	Regular Wax Ring	Boxed	48	29 lbs. - 13.2 kg
--------	------------------	-------	----	-------------------



FLEX-O-SEAL FLANGED WAX RING WITH URETHANE Extra long flange is excellent for built-up floors. This is a urethane gasket made of tough, flexible urethane foam, which is completely impregnated with wax. Combined with the plastic flange, it produces the strongest leakproof gasket on the market.

FOS1SU	Flanged Wax Ring with Urethane	Boxed	24	16 lbs. - 7.3 kg
--------	--------------------------------	-------	----	------------------



FLEX-O-SEAL URINAL GASKET REINFORCED WITH URETHANE Fits 2" outlet. Guaranteed for 10 years.

FOS2U	Urinal Gasket with Urethane	Boxed	12	5 lbs. - 2.3 kg
-------	-----------------------------	-------	----	-----------------



WAX RING INSTALLATION INSTRUCTIONS

1. Set the toilet bowl upside down on a smooth and soft surface. Remove the plastic tray from the wax ring and place it around the discharge opening with the flange pointing away from the bowl. Press the wax ring softly onto the toilet to install.
2. Turn the toilet and place it over the floor ensuring that its discharge opening is perfectly aligned with the drain hole in the floor. Twist it gently to ensure seal.
3. Set screws to secure the toilet on the floor.



*WITH DOUBLE NUT AND DOUBLE WASHER. ALSO AVAILABLE WITH 2 ROUND PLASTIC RETAINER WASHERS IN PLACE OF DOUBLE NUT AND DOUBLE WASHER, AT NO ADDITIONAL COST. REPLACE "D" WITH "R" WHEN ORDERING SETS WITH RETAINER WASHERS.



FREEZE-FIGHTER ANTI-FREEZE CONCENTRATE Nontoxic, **aqua blue color** anti-freeze for protecting heating, cooling, pool and potable water systems. Burst protection to -100°F (-73°C). Freeze protection to -60°F (-51°C). **Made in the U.S.A.**

STOCK CODE	SIZE	CONTAINER	ITEMS/CASE	CASE WEIGHT
FF1	Gallon - 3.785 L	Plastic Jug w/ Spout	6	57 lbs. - 25.9 kg
FF5	5 Gallon - 18.9 L	Pail w/ Handle	1	44 lbs. - 20.0 kg
FF55	55 Gallon - 208 L	55 Gallon Drum	1	515 lbs. - 233.6 kg
FF275	275 Gallon - 1041 L	275 Gallon Tote	1	2575 lbs. - 1168 kg

	Percent in Solution					
	75%	60%	50%	40%	30%	25%
Burst Protection °F	-110.0	-90.0	-75.0	-50.0	-20.0	-10.0
Burst Protection °C	-78.9	-67.8	-59.4	-45.6	28.9	-23.3
Freeze Point °F	-70.0	-50.0	-21.0	-2.0	11.0	16.0
Freeze Point °C	-56.7	-45.6	-29.4	-18.9	-11.7	-8.9



FREEZE-POINT -100 ANTI-FREEZE SOLUTION Nontoxic, **blue color** anti-freeze for protecting heating, cooling, pool and potable water systems. Burst protection to -100°F (-73°C). Freeze protection to -50°F (-46°C). **Made in the U.S.A.**

FP1	FP5	FP55	FP275
Gallon - 3.785 L	5 Gallon - 18.9 L	55 Gallon - 208 L	275 Gallon - 1041 L
Plastic Jug w/ Spout	Pail w/ Handle	55 Gallon Drum	275 Gallon Tote
6	1	1	1
58 lbs. - 26.3 kg	45 lbs. - 20.4 kg	515 lbs. - 233.6 kg	2575 lbs. - 1168 kg

	Percent in Solution					
	50%	60%	70%	80%	90%	100%
Burst Protection °F	-50.0	-54.0	-57.0	-80.0	-84.0	-100.0
Burst Protection °C	-45.6	-47.8	-49.4	-62.2	-64.5	-73.3
Freeze Point °F	0.0	-5.0	-11.0	-35.0	-44.0	-50.0
Freeze Point °C	-17.8	-20.6	-23.9	-37.2	-42.2	-45.6



FREEZE-FIGHTER RTU-PG 35% ANTI-FREEZE Ready to Use (RTU), nontoxic, propylene glycol (PG) based, **blue color** anti-freeze for protecting hydronic, heating, cooling, pool and potable water systems. Burst protection to -60°F (-51°C). Freeze protection to 0°F (-18°C). **Made in the U.S.A.**

FRTU5	FRTU55	FRTU275
5 Gallon - 18.9 L	55 Gallon - 208 L	275 Gallon - 1041 L
Pail w/ Handle	55 Gallon Drum	275 Gallon Tote
1	1	1
44 lbs. - 20.0 kg	500 lbs. - 226.8 kg	2500 lbs. - 1134 kg

	Percent in Solution					
	100%	80%	75%	60%	50%	40%
Burst Protection °F	-60.0	DO NOT DILUTE - READY TO USE				
Burst Protection °C	-51.0	DO NOT DILUTE - READY TO USE				
Freeze Point °F	0.0	DO NOT DILUTE - READY TO USE				
Freeze Point °C	-17.8	DO NOT DILUTE - READY TO USE				



FREEZE-FIGHTER ANTI-FREEZE SOLUTION Nontoxic, **pink color** anti-freeze for protecting heating, cooling, pool and potable water systems. Burst protection to -50°F (-46°C). Freeze protection to -15°F (-26°C). **Made in the U.S.A.**

AF1	AF5	AF55	AF275
Gallon - 3.785 L	5 Gallon - 18.9 L	55 Gallon - 208 L	275 Gallon - 1041 L
Plastic Jug w/ Spout	Pail w/ Handle	55 Gallon Drum	275 Gallon Tote
6	1	1	1
57 lbs. - 25.9 kg	44 lbs. - 20.0 kg	500 lbs. - 226.8 kg	2500 lbs. - 1134 kg

	Percent in Solution					
	100%	80%	75%	60%	50%	40%
Burst Protection °F	-50.0	-40.0	-30.0	-20.0	-10.0	0.0
Burst Protection °C	-45.6	-40.0	-34.4	-28.9	-23.3	-17.8
Freeze Point °F	-20.0	0.0	6.0	10.0	16.0	19.0
Freeze Point °C	-28.9	-17.8	-14.4	-12.2	-8.9	-7.2



SOLAR HI-TEMP HEAT TRANSFER FLUID AND ANTI-FREEZE SOLUTION Nontoxic, **blue color** glycerin based, Heat Transfer Fluid and Anti-Freeze Solution with special anti-corrosion inhibitors and color indicators, that provides heat transfer up to 356°F (180°C). Burst protection to -50°F (-46°C). Freeze protection to -15°F (-26°C). Recommended for vacuum tube solar collectors. **Made in the U.S.A.**

SH5	SH55	SH275
5 Gallon - 18.9 L	55 Gallon - 208 L	275 Gallon - 1041 L
Pail w/ Handle	55 Gallon Drum	275 Gallon Tote
1	1	1
51 lbs. - 23.1 kg	580 lbs. - 263.1 kg	2900 lbs. - 1315 kg

Pallet Quantities for Anti-Freeze: 1 Gallon = 27 Cases, 5 Gallon = 32 Pails
Contact J.C. Whitlam Manufacturing for custom blends and private label opportunities.

LEAK DETECTORS, CEMENTS, SEALERS & CLEANERS

BIG BUBBLE GAS LEAK DETECTOR Noncorrosive, nonfreezing, nontoxic fluorescent yellow leak detector for natural gas, refrigeration, nitrogen, air, carbon dioxide and other pressurized gases.

Meets ASTM G188-05. **Made in the U.S.A. Not recommended for oxygen systems.**

STOCK CODE	SIZE	CONTAINER	ITEMS/CASE	CASE WEIGHT
LD10Z	1 oz - 29.6 ml	Yorker Bottle	36	4 lbs. - 1.8 kg
LD8	1/2 Pint - 237 ml	Dauber Top Container	24	16 lbs. - 7.3 kg
LD1	Gallon - 3.785 L	Plastic Jug w/ Spout	6	55 lbs. - 24.9 kg
LD55	55 Gallon - 208 L	55 Gallon Drum	1	502 lbs. - 227.7 kg

 Fluorescent Yellow



BIG BUBBLE GAS LEAK DETECTOR / SPECIAL SPRAY FORMULA Noncorrosive, nonfreezing, nontoxic iridescent blue leak detector for natural gas, refrigeration, nitrogen, air, carbon dioxide and other pressurized gases. Temperature range: -10°F (-23°C) to 212°F (100°C). Meets ASTM G188-05.

Made in the U.S.A. Not recommended for oxygen systems. See page 33 for sprayers.

LDS	Pint - 473 ml	Container w/ Sprayer	12	16 lbs. - 7.3 kg
LDS16	Pint - 473 ml	Plastic Container	12	15 lbs. - 6.8 kg
LDS32	Quart - .95 L	Container w/ Sprayer	12	31 lbs. - 14.1 kg
LDS1	Gallon - 3.785 L	Plastic Jug w/ Spout	6	55 lbs. - 24.9 kg
LDS5	5 Gallon - 18.9 L	Pail w/ Handle	1	42 lbs. - 19.1 kg
LDS55	55 Gallon - 208 L	55 Gallon Drum	1	502 lbs. - 227.7 kg

 Blue



HEAT-TYTE FURNACE CEMENT Asbestos free, gray, high heat refractory and retort furnace cement. Temperature rating 0°F to 3000°F (-18°C to 1649°C). **Made in the U.S.A.**

HT64	1/2 Gallon - 1.89 L	Plastic Pail w/ Handle	6	44 lbs. - 20.0 kg
HT1	Gallon - 3.785 L	Plastic Pail w/ Handle	4	60 lbs. - 27.2 kg

 Gray



SEAL-TYTE BOILER SEALER Liquid boiler sealer for all steam systems. Fills and seals holes and cracks in steam boilers. **Made in the U.S.A. Not for use in boilers containing Anti-Freeze.**

STS32	Quart - .95 L	Plastic Jug w/ Spout	12	40 lbs. - 18.1 kg
--------------	---------------	----------------------	----	-------------------

 Blue



BOILER-AIDE 2-N-1 All purpose boiler cleaner and treatment. Cleans all dirty boilers and controls sludge, corrosion, scale and foaming. **Made in the U.S.A.**

BT32	Quart - .95 L	Plastic Jug w/ Spout	12	32 lbs. - 14.5 kg
BT1	Gallon - 3.785 L	Plastic Jug w/ Spout	6	57 lbs. - 25.9 kg
BT5	5 Gallon - 18.9 L	Pail w/ Handle	1	44 lbs. - 20.0 kg
BT55	55 Gallon - 208 L	55 Gallon Drum	1	500 lbs. - 226.8 kg

 Clear



SLUDGE•B•GONE** Liquid fuel oil additive. Dissolves sludge and water in all fuel oils. **Made in the U.S.A.**

SBG32	Quart - .95 L	Plastic Jug w/ Spout	12	26 lbs. - 11.8 kg
--------------	---------------	----------------------	----	-------------------

 Amber



**D.O.T. Classified Shipping Items. See Page 36.

CATEGORY 10



HIGHSIDE CHEMICALS

CHEMICALS

LEAK LOCK A resin based soft setting brushable paste pipe joint compound resistant to all refrigerants, oils, water and most chemicals, liquids and gases. **Made in the U.S.A.**

STOCK CODE	SIZE	CONTAINER	ITEMS/CASE	CASE WEIGHT
HS10001	1-1/3 oz. - 39 ml	Plastic Tube	12	2 lbs. - .90 kg
HS10004	4 oz. - 118 ml	Plastic Bottle w/ Brush Top	12	7 lbs. - 2.7 kg
HS10016	16 oz. - 473 ml	Plastic Jar w/ Brush Top	12	19 lbs. - 8.6 kg
HS10128	Gallon - 3.785 L	Can	1	12 lbs. - 5.4 kg

LEAK LOCK GOLD with Teflon® A resin based soft setting brushable paste pipe joint compound with Teflon® resistant to all refrigerants, oils, water and most chemicals, liquids and gases. **Made in the U.S.A.**

STOCK CODE	SIZE	CONTAINER	ITEMS/CASE	CASE WEIGHT
HS11001	1-1/3 oz. - 39 ml	Plastic Tube	12	2 lbs. - .90 kg
HS11004	4 oz. - 118 ml	Plastic Bottle w/ Brush Top	12	5 lbs. - 2.3 kg
HS11016	16 oz. - 473 ml	Plastic Jar w/ Brush Top	12	17 lbs. - 7.7 kg
HS11128	Gallon - 3.785 L	Can	1	12 lbs. - 5.4 kg

HEAT SHIELD All-temperature barrier spray prevents heat damage to nearby components during soldering, brazing or welding. Its unique no-drip formula sprays on as a gel and evaporates within 24 to 48 hours without staining. For use on all surfaces including but not limited to: wood, insulation, valves, piping and drywall. **Made in the U.S.A.**

STOCK CODE	SIZE	CONTAINER	ITEMS/CASE	CASE WEIGHT
HS31032	32 oz. - .95 L	Spray Bottle	12	30 lbs. - 13.6 kg

CATEGORY 11



SCREWDRIVERS

SCREWDRIVERS

"6 IN 1" SLOTTED/PHILLIPS™ SCREWDRIVER* All the drives of a "4 IN 1" plus: 1/4" (.64 cm) and 5/16" (.79 cm) nut drivers. Reversible bits, Slotted 4-5 and Phillips™ #1 and Slotted 8-10 and Phillips™ #2. Stress relieved blast finished bits. Chrome/nickel plated nut drivers and inner handle receptacle. **The Professional Choice.**

STOCK CODE	SIZE	CONTAINER	ITEMS/CASE	CASE WEIGHT
#4	Slotted Bits 4-5 and 8-10 and Phillips™ #1 and #2	Display Box	12	5 lbs. - 2.3 kg

"6 IN 1" SLOTTED/PHILLIPS™ SCREWDRIVER* All the drives of a "4 IN 1" plus: 1/4" (.64 cm) and 5/16" (.79 cm) nut drivers. Reversible bits, Slotted 4-5 and 8-10, and Phillips™ #1 and #2. Cushion grip. Stress relieved blast finished bits. Chrome / nickel plated nut drivers and inner handle receptacle.

The Professional Choice.

STOCK CODE	SIZE	CONTAINER	ITEMS/CASE	CASE WEIGHT
#5	Slotted Bits 4-5 and 8-10 and Phillips™ #1 and #2	Display Box	12	6 lbs. - 2.7 kg
#5A	Slotted Bits 4-5 and 8-10 and Phillips™ #1 and #2	Display Box	12**	6 lbs. - 2.7 kg

**Special order 72 or more "6 IN 1" screwdrivers of the #5A and have your company name imprinted on the black grip (up to 15 characters). High visibility handle with black grip. Allow 3 weeks for delivery. Guaranteed sale on special imprinted screwdrivers does not apply.

"6 IN 1" SLOTTED/PHILLIPS™ SCREWDRIVER* SPECIAL ORDER - All the drives of a "4 IN 1" plus: 1/4" (.64 cm) and 5/16" (.79 cm) nut drivers. Reversible bits, Slotted 4-5 and Phillips™ #1 and Slotted 8-10 and Phillips™ #2. Stress relieved blast finished bits. Chrome/nickel plated nut drivers and inner handle receptacle.

The Professional Choice.

STOCK CODE	SIZE	CONTAINER	ITEMS/CASE	CASE WEIGHT
#6R	Slotted Bits 4-5 and 8-10 and Phillips™ #1 and #2	Display Box	12	5 lbs. - 2.3 kg
#6B	Slotted Bits 4-5 and 8-10 and Phillips™ #1 and #2	Display Box	12	5 lbs. - 2.3 kg
#6N	Slotted Bits 4-5 and 8-10 and Phillips™ #1 and #2	Display Box	12	5 lbs. - 2.3 kg

*Special order 72 or more "6 IN 1" screwdrivers and have your company name imprinted on the handle (up to 30 characters). Allow 3 weeks for delivery. Guaranteed sale on special imprinted screwdrivers does not apply. Your choice of red, black, or navy blue with white imprint.

BLACK RUBBER UTILITY STRAPS Professional quality EPDM rubber tie-down utility straps with exceptional strength. Squared head and tapered neck reduces strap stress. "S" Hooks are attached to straps. Made from UV resistant EPDM rubber. **Made in the U.S.A.**

STOCK CODE	SIZE	CONTAINER	ITEMS/CASE	CASE WEIGHT
#US9	9" - 23 cm	Boxed	50	10 lbs. - 4.5 kg
#US9A	9" - 23 cm	Boxed	12	3 lbs. - 1.4 kg
#US15	15" - 38 cm	Boxed	50	11 lbs. - 5.0 kg
#US15A	15" - 38 cm	Boxed	12	4 lbs. - 1.8 kg
#US20	20" - 51 cm	Boxed	50	12 lbs. - 5.4 kg
#US20A	20" - 51 cm	Boxed	12	4 lbs. - 1.8 kg
#US31	31" - 79 cm	Boxed	50	17 lbs. - 7.7 kg
#US31A	31" - 79 cm	Boxed	12	5 lbs. - 2.3 kg
#US41	41" - 104 cm	Boxed	50	20 lbs. - 9.1 kg
#US41A	41" - 104 cm	Boxed	12	5 lbs. - 2.3 kg



NYLON WEB CAM BUCKLE UNIVERSAL TIE-DOWN STRAP Nylon webbing, non-slip cam buckle strap rated for up to 1200 lbs. (544 kg). Colors may vary. **Made in the U.S.A.**

#WS10	1" x 10" 2.54 cm x 3.05 m	Boxed (Clamshell)	4	9 lbs. - 4.1 kg
-------	------------------------------	-------------------	---	-----------------



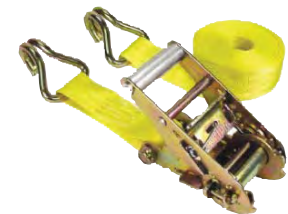
NYLON WEB RATCHET TYPE UNIVERSAL TIE-DOWN STRAP Yellow nylon webbing, non-slip ratchet type strap rated for up to 3000 lbs. (1361 kg). Colors may vary. **Made in the U.S.A.**

#WS16	1" x 16" 2.54 cm x 4.88 m	Boxed	4	8 lbs. - 3.6 kg
-------	------------------------------	-------	---	-----------------



NYLON WEB RATCHET TYPE UNIVERSAL TIE-DOWN STRAP Yellow 1-3/4" x 25' (4.45 cm x 7.62 m) ratchet type strap rated for up to 5500 lbs. (2495 kg). Excellent for large delivery trucks. Ratchet can be permanently attached to truck. End hook is standard size that fits most truck rails. Colors may vary. **Made in the U.S.A.**

#WS25	1-3/4" x 25" 4.45 cm x 7.62 m	Boxed	1	6 lbs. - 2.7 kg
-------	----------------------------------	-------	---	-----------------



SUPER PICK MATTOCK 36" (.91 m) FIBERGLASS HANDLE Safety grip for easier handling with gloves, reduces fatigue. Forged heat treated and ground heads. 19-1/2" (49.5 cm) tip to tip. **Made in the U.S.A.**

#279	19-1/2" Head, 36" Handle 4.95 cm Head, .91 m Handle	Boxed	1	6 lbs. - 2.7 kg
------	--	-------	---	-----------------



SUPER FIBERGLASS HANDLE, FULL SIZE SLEDGEHAMMERS The toughest, most durable sledgehammer available. Safety grip for easier handling with gloves. Fiberglass handle also reduces fatigue.

#334	8 lbs. - 3.6 kg	Bundled	1	10 lbs. - 4.5 kg
#278	10 lbs. - 4.5 kg	Bundled	1	12 lbs. - 5.4 kg
#336	12 lbs. - 5.4 kg	Bundled	1	14 lbs. - 6.4 kg
#337	16 lbs. - 7.3 kg	Bundled	1	18 lbs. - 8.2 kg





ROUND POINT SUPER SHOVEL 48" (1.2 m) FIBERGLASS HANDLE Forged 14 gauge steel blade, forward turned step. Used for digging in hard and soft soil.

STOCK CODE	SIZE	CONTAINER	ITEMS/CASE	CASE WEIGHT
#283	8-3/4" x 12" Blade, 48" Handle 22.22 cm x 30.48 cm Blade 1.2 m Handle	Bundled	3	17 lbs. - 7.7 kg



SQUARE POINT SUPER SHOVEL 48" (1.2 m) FIBERGLASS HANDLE Forged 14 gauge steel blade, forward turned step. Used for shoveling gravel, dirt and loose material.

#284	9-1/2" x 12" Blade, 48" Handle 24.13 cm x 30.48 cm Blade 1.2 m Handle	Bundled	3	15 lbs. - 6.8 kg
------	---	---------	---	------------------



TRENCH SUPER SHOVEL 48" (1.2 m) FIBERGLASS HANDLE Cut down hollow back shovel blades simplify cleaning soil from machine dug trenches. The lift angle of the shovel blade is 32°. **Made in the U.S.A.**

#318	4" x 12" Blade, 48" Handle 10.16 cm x 30.48 cm Blade, 1.2 m Handle	Bundled	3	12 lbs. - 5.4 kg
------	--	---------	---	------------------



#319	5" x 12" Blade, 48" Handle 12.7 cm x 30.48 cm Blade 1.2 m Handle	Bundled	3	13 lbs. - 5.9 kg
------	--	---------	---	------------------



DRAIN SPADE / SHARP SHOOTER SUPER SHOVEL WITH FIBERGLASS HANDLE Hollow back blade, forward turned step. Used for trenching deep and narrow holes.

#274	4-3/4" x 16" Blade, 48" Handle 12.1 cm x 40.64 cm Blade 1.2 m Handle	Bundled	3	14 lbs. - 6.4 kg
------	--	---------	---	------------------



DRAIN SPADE / SHARP SHOOTER SUPER SHOVEL WITH FIBERGLASS "D" HANDLE Hollow back blade, forward turned step. Used for cutting and trenching deep and narrow holes.

#282	4-3/4" x 16" Blade, 27" Handle 12.1 cm x 40.64 cm Blade .69 m Handle	Bundled	2	9 lbs. - 4.1 kg
------	--	---------	---	-----------------



ROUND POINT SUPER SHOVEL 27" (.69 m) WITH FIBERGLASS "D" HANDLE Forged 14 gauge steel blade, forward turned step. Used for digging in hard and soft soil. **Made in the U.S.A.**

#326	8-3/4" x 12" Blade, 27" Handle 22.22 cm x 30.48 cm Blade .69 m Handle	Bundled	2	9 lbs. - 4.1 kg
------	---	---------	---	-----------------

ORDER \$500.00 NET OR MORE OF: SHOVELS, SPADES, PICK MATTOCK, AND/OR SLEDGEHAMMERS AND RECEIVE ONE FREE DISPLAY BARREL!



Stock Code
BARREL

FIBERGLASS SHAFT SOIL PROBES* With fiberglass "T" handle. 1/2" (1.27 cm) diameter shaft has heavy duty zinc metal tip for durability and ease of extraction. Safe, nonconductive probe for locating irrigation, power and water lines. Probes are constructed of solid yellow fiberglass that will not weather, warp or splinter. **Made in the U.S.A.**

STOCK CODE	SIZE	CONTAINER	ITEMS/CASE	CASE WEIGHT
#280	48" Shaft - 1.2 m Shaft	Bundled	6	9 lbs. - 4.1 kg
#285	60" Shaft - 1.5 m Shaft	Bundled	6	10 lbs. - 4.5 kg

REPLACEMENT ZINC PROBE TIP KIT* Contains replacement tip, epoxy and instructions. **Made in the U.S.A.**

#395		Boxed	4	1 lb. - 0.5 kg
------	--	-------	---	----------------

MINI METER KEY 20" (50.8 cm) length, 8" (20.32 cm) handle. Made from heavy 3/4" (1.91 cm) round bar stock. Stores compactly in tool box. High visibility yellow. Machined universal socket. **NOTE:** Fits old and new style meter valves. **Made in the U.S.A.**

#64	20" Long, 8" Handle 50.8 cm Long 20.32 cm Handle	Bundled	1	4 lbs. - 1.8 kg
-----	--	---------	---	-----------------

SUPER METER KEY 42" (1.07 m) length, 24" (61 cm) handle. Made from heavy 1" (2.54 cm) square bar stock. High visibility yellow. Machined universal socket. **NOTE:** Fits old and new style meter valves. **Made in the U.S.A.**

#156	42" Long, 24" Handle 1.07 m Long, 61 cm Handle	Bundled	1	8 lbs. - 3.6 kg
------	---	---------	---	-----------------

HEAVY METER KEYS Curb stop key made from heavy 3/4" (1.91 cm) round bar stock. High visibility yellow. Machined universal socket. **NOTE:** Stepped Key fits old and new style meter valves. #403 Key has a 1-1/4" wrench made to fit 1-1/2" openings. **Made in the U.S.A.**

#65	42" Long, 18" Handle 1.07 m Long, 45.7 cm Handle	Bundled	1	8 lbs. - 3.6 kg
#397	6' Long, 24" Handle 1.83 m Long, 61 cm Handle	Bundled	1	13 lbs. - 5.9 kg
#400	7' Long, 24" Handle 2.13 m Long, 61 cm Handle	Bundled	1	14 lbs. - 6.4 kg
#403	7' Long, 24" Handle 2.13 m Long, 61 cm Handle	Bundled	1	15 lbs. - 6.8 kg
#401	8' Long, 24" Handle 2.43 m Long, 61 cm Handle	Bundled	1	16 lbs. - 7.3 kg

TELESCOPIC VALVE WRENCHES Adjustable length. Telescopic valve keys for 2-inch operating nuts makes transportation easier. Made of 1-1/2" square tube outside and 1-1/4" square tube inside. Has 24" handle, zinc plated "quick release" pin. High visibility yellow. 2" (5.08 cm) square socket. **Made in the U.S.A.**

#399	3-1/2' - 6' Long, 24" Handle 1.07 m - 1.83 m Long, 61 cm Handle	Bundled	1	13 lbs. - 5.9 kg
#402	4-1/2' - 8' Long, 24" Handle 1.40 m - 2.43 m Long 61 m Handle	Bundled	1	15 lbs. - 6.8 kg

3 IN 1 SERVICE KEY Adjustable length. 2" (5.08 cm) valve wrench, meter key, and handwheel attachment. Valve and meter key attachments are telescopic. Made of 1-1/2" square tube outside and 1-1/4" square tube inside. **Made in the U.S.A.**

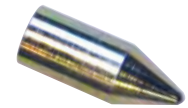
#404	46" - 80" Long, 24" Handle 1.17 m - 2.03 m Long 61 cm Handle	Bundled	1	13 lbs. - 5.9 kg
------	--	---------	---	------------------



#404 collapses to 46" (1.17 m) length x 4 1/2" (11.4 cm) width for convenient storage



Handwheel attachment



*NOTE: Probe Tips are considered expendable materials and therefore are not covered by the Warranty. We can make meter keys in any length. Call for pricing on lengths not shown above. We can also make meter keys that fit 1-1/4" pipe at no extra cost. Call for available sizes.



TONGUE & GROOVE PLIERS/CHANNELLOCK BLUE® Right angled teeth that grip in all directions for maximum bite. Undercut tongue and groove won't slip. **Permalock™** fastener eliminates nut and bolt failure. **Made in the U.S.A.**



- #159 - CHANNELLOCK® #426 Length = 6-1/2" (16.51 cm) - Adjustments = 5 - Capacity = 7/8" (22 mm)
- #161 - CHANNELLOCK® #420 Length = 9-1/2" (24.13 cm) - Adjustments = 5 - Capacity = 1-1/2" (38 mm)
- #162 - CHANNELLOCK® #430 Length = 10" (25.40 cm) - Adjustments = 7 - Capacity = 2" (51 mm)
- #163 - CHANNELLOCK® #440 Length = 12" (30.48 cm) - Adjustments = 7 - Capacity = 2-1/4" (57 mm)
- #165 - CHANNELLOCK® #460 Length = 16" (40.64 cm) - Adjustments = 8 - Capacity = 4-1/4" (108 mm)
- #196 - CHANNELLOCK® #480 Length = 20-1/4" (51.44 cm) - Adjustments = 12 - Capacity = 5-1/2" (140 mm)

STOCK CODE	SIZE	CONTAINER	ITEMS/CASE	CASE WEIGHT
#159	6-1/2" - 16.51 cm	Boxed (Clamshell)	5	5 lbs. - 2.3 kg
#161	9-1/2" - 24.13 cm	Boxed (Clamshell)	5	5 lbs. - 2.3 kg
#162	10" - 25.40 cm	Boxed (Clamshell)	5	6 lbs. - 2.7 kg
#163	12" - 30.48 cm	Boxed (Clamshell)	5	8 lbs. - 3.6 kg
#165	16" - 40.64 cm	Boxed (Clamshell)	2	6 lbs. - 2.7 kg
#196	20-1/4" - 51.44 cm	Boxed (Clamshell)	2	9 lbs. - 4.1 kg



CURVED JAW TONGUE & GROOVE PLIERS/CHANNELLOCK BLUE® Right angled teeth that grip in all directions for maximum bite. Undercut tongue and groove won't slip. **Permalock™** fastener eliminates nut and bolt failure. **Made in the U.S.A.**

- #164 - CHANNELLOCK® #442 Length = 12" (30.48 cm) - Adjustments = 7 - Capacity = 2-1/4" (57 mm)

#164	12" - 30.48 cm	Boxed (Clamshell)	5	8 lbs. - 3.6 kg
------	----------------	-------------------	---	-----------------



9-1/2" (24.13 cm) GRIPLOCK® UTILITY PLIERS/CHANNELLOCK BLUE® Ergonomically designed offset head for greater leverage. Special jaw design accommodates many shapes. **Permalock™** fastener eliminates nut and bolt failure. **Made in the U.S.A.**

- #168 - CHANNELLOCK® #GL10 Length = 9-1/2" (24.13 cm) - Adjustments = 5 - Capacity = 1-1/4" (32 mm)

#168	9-1/2" - 24.13 cm	Boxed (Clamshell)	5	6 lbs. - 2.7 kg
------	-------------------	-------------------	---	-----------------



CHANNELLOCK® LONG NOSE PLIERS WITH SIDE CUTTER/CHANNELLOCK BLUE® Cross hatching on jaws. Slender, perfectly mated jaws with no side wobble provide a firm grip on fine work in tight places. Sharp, hand honed side cutter is heat treated to hold its edge. High polished, carbon drop forged set. **Made in the U.S.A.**

- #175 - CHANNELLOCK® #326 Length = 6" (15.24 cm) with side cutter.

- #178 - CHANNELLOCK® #317 Length = 7-1/2" (19.05 cm) with side cutter

#175	6" - 15.24 cm	Boxed (Clamshell)	5	2 lbs. - 0.9 kg
#178	7-1/2" - 19.05 cm	Boxed (Clamshell)	5	3 lbs. - 1.4 kg



CHANNELLOCK® SPEEDGRIP™ 430 TONGUE & GROOVE PLIERS/CHANNELLOCK BLUE® Fast and easy non-slip adjustments. Laser heat-treated crosshatch teeth grip 2.5X better than traditional CHANNELLOCK® 90-degree teeth. SAVE-T-STOP® feature prevents finger pinch. Slender, perfectly mated jaws with no side wobble provide a firm grip on fine work in tight places. Reaming feature for easy deburring of pipe. Forged high carbon U.S. steel for ultimate strength is specially coated for rust prevention. **Made in the U.S.A.**

- #430X - CHANNELLOCK® #430X Length = 10" (24.15 cm) - Adjustments = 5 - Capacity = 2" (50.8) mm

- #440X - CHANNELLOCK® #440X Length = 12" (30.6 cm) - Adjustments = 5 - Capacity = 2.32" (58.93mm)

#430X	10" - 24.15 cm	Boxed (Clamshell)	5	2 lbs. - 0.9 kg
#440X	12" - 30.6 cm	Boxed (Clamshell)	5	3 lbs. - 1.4 kg

DUAL SOCKET RATCHET WRENCH

PLUMB-PRO DUAL SOCKET RATCHET WRENCHES fit the common water works fasteners for mechanical joints, flange bolts, repair clamps, service saddles and sleeves. PLUMB-PRO Dual Socket Ratchet Wrench sockets work by letting the bolt pass completely through the socket and arm head so nuts can be worked on any threaded length. Wrench handles are color-coded to easily distinguish individual sizes. Each wrench also offers a quick switch on the head for easy reversal. The welded protective cap is designed to prevent dirt and foreign material to prevent jamming the gear assembly. Faster to use than pipe wrenches or adjustable wrenches.

#244	7/8" - 3/4" - 22mm - 19 mm	Boxed	1	2.4 lbs. - 1.1 kg
#245	1-1/8" - 15/16" - 29 mm - 24 mm	Boxed	1	2.4 lbs. - 1.1 kg
#246	1-1/4" - 1-1/16" - 32 mm - 27 mm	Boxed	1	2.4 lbs. - 1.1 kg



CHANNELLOCK® items are packed in CHANNELLOCK® Blister Display cards

PLIERS

SOFT TOUCH PLIERS* Protects decorative and bright plated plumbing fixtures. Soft jaws will not destroy plastic fittings. Maximum opening of 1-3/4" (4.45 cm) and a length of 10" (25.4 cm). Works great on shower arms. Automatically opens by the spring loaded mechanism. No need to open the handles by your fingers while in use.

The Professional Choice.

STOCK CODE	SIZE	CONTAINER	ITEMS/CASE	CASE WEIGHT
#393	10" - 25.4 cm	Bagged & Boxed	3	3 lbs. - 1.4 kg

NYLON REPLACEMENT JAWS* For #393 Soft Touch Pliers.

#389	1-3/4" - 4.45 cm	Bagged & Boxed	3	1 lb. - 0.5 kg
------	------------------	----------------	---	----------------

SOFT JAW WONDER PLIERS* Wide jaw opening up to 2-3/4" (7 cm). Comes with round and square soft jaw inserts. Great for repair work on flush valves. Will not scratch plated finishes. Works on Delta® and other dome nuts. Will not crush threaded tail pieces. Automatically opens by the spring loaded mechanism. Opening range of 1" - 2-3/4" (2.5 cm - 7 cm) and a length of 10-1/2" (26.67 cm).

#394	10-3/4" - 27.30 cm	Bagged & Boxed	3	4 lbs. - 1.8 kg
------	--------------------	----------------	---	-----------------

ROUND REPLACEMENT JAWS* For #394 Soft Jaw Wonder Pliers.

#391	2-3/4" - 7 cm	Bagged & Boxed	3	1 lb. - 0.5 kg
------	---------------	----------------	---	----------------

SQUARE REPLACEMENT JAWS* For #394 Soft Jaw Wonder Pliers.

#392	2-3/4" - 7 cm	Bagged & Boxed	3	1 lb. - 0.5 kg
------	---------------	----------------	---	----------------

WRENCHES

TELESCOPIC BASIN WRENCH Spring-loaded jaws of forged alloy steel provide fast, one-hand ratcheting in tight quarters. Tension plug holds head in any position up to 90 degree angle. Chrome-plated handle and shank. Telescopic shank quickly adjust to 10" - 17" (25.4 cm - 43.2 cm).

#160	10" - 17" 25.4 cm - 43.2 cm	Bagged & Boxed	5	8 lbs. - 3.6 kg
------	--------------------------------	----------------	---	-----------------

NO HUB TORQUE WRENCH For tightening 5/16" coupling nuts to 60 in. lbs. Automatic release at pre-set 60 in. lbs. T-handle ratchets one way. Built-in reversing bar.

#243	5/16" - 0.79 cm	Bagged & Boxed	3	5 lbs. - 2.3 kg
------	-----------------	----------------	---	-----------------

HEAVY DUTY WATER HEATER ELEMENT WRENCH A professional grade tool that easily removes elements without damaging the unit. Sliding "T" type handle allows for even pressure on both ends. Removes the most stubborn elements. 12 point heavy duty chrome plated steel socket and 18" (45.7 cm) "T" handle.

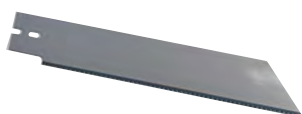
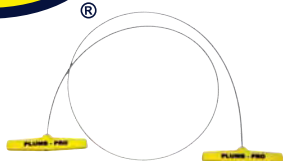
#145	1-1/2" x 3/4" Socket 18" Handle 38 mm x 19 mm Socket 45.7 cm Handle	Boxed	1	4 lbs. - 1.8 kg
------	--	-------	---	-----------------

"2 IN 1" SWIMMING POOL WRENCH Removable 18" (45.7 cm) handle. 1" (2.54 cm) square end fits 1-1/2" (3.81 cm) clean out plugs. 1-1/2" (3.81 cm) square end fits 2" (5.08 cm) clean out plugs. 31" (78.74 cm) long. Made of rust resistant heavy duty steel. **Made in the U.S.A.**

#405	1" Wrench - 2.54 cm Wrench 1-1/2" Wrench - 3.81 cm Wrench 18" Handle - 45.7 cm 31" Long - 78.74 cm Long	Boxed	4	9 lbs. - 4.1 kg
------	--	-------	---	-----------------



*NOTE: The soft jaws of #393/#394 and #389/#391/#392 are considered expendable materials and therefore are not covered by the Warranty.



"T-HANDLE" CABLE SAW* For cutting PVC Pipe. For tight spots offering little clearance. Fits easily into tool box or pocket. Faster and easier than hacksaws in close quarters. The easy to use "T-handles" offer less stress on the hands than loop handles. **Made in the U.S.A.**

STOCK CODE	SIZE	CONTAINER	ITEMS/CASE	CASE WEIGHT
#240	Approx. 36" Approx. 91.44 cm	Boxed	12	1 lb. - 0.5 kg

PROFESSIONAL HACKSAW 12" (30.48 cm) BLADE* Designed with the professional in mind. This saw features state of the art design. The blade can be set at two different angles, straight and 45 degree. Up to 10 blades can be stored in the top of the frame. Comes complete with a 12" (30.48 cm) carbon steel 18TPI blade.

#67	12" Blade 18TPI 30.48 cm Blade 18TPI	Boxed	3	5 lbs. - 2.3 kg
-----	---	-------	---	-----------------

REPLACEMENT BLADES FOR #67 HACKSAW*

#147 - Carbon steel blade. Low cost. Cuts wood, plastic and easy to machine metals such as conduit, aluminum, copper tubing, etc. Blade: 12" (30.48 cm), 18TPI.

#147	12" Blade 18TPI 30.48 cm Blade 18TPI	Boxed	10	1 lb. - 0.5 kg
------	---	-------	----	----------------

CROC-SAW PLASTIC PIPE SAW WITH PISTOL GRIP HANDLE WITH 10.5" (27 cm) BLADE Handsaw is designed for the professional plumber, irrigation technician, electrician, and general contractor. Its rubberized pistol grip is ergonomically designed to power through PVC, ABS and CPVC plastic pipe with ease. The dual teeth construction cuts on the push and pull, saving both time and energy.

#184	10-1/2" Blade 27 cm Blade	Carded and Boxed	5	2 lbs. - 0.9 kg
------	------------------------------	------------------	---	-----------------

PVC SAW - ALUMINUM HANDLE WITH 13" (33.02 cm) BLADE* Handsaw is designed for the plumber, electrician, and all professional general contractors. The unique design allows it to cut the following: fiberglass panels, PVC, ABS & CPVC plastic pipe, nail embedded wood, wallboard, brass and copper tubing, paneling and general purpose wood cutting.

#182	19-1/2" 49.53 cm	Boxed	5	5 lbs. - 2.3 kg
------	---------------------	-------	---	-----------------

REPLACEMENT BLADES FOR #182 PVC SAW*

#183	13" Blade 33.02 cm Blade	Boxed	5	3 lbs. - 1.4 kg
------	-----------------------------	-------	---	-----------------

PVC SAW - ALUMINUM HANDLE WITH 18" (45.72 cm) BLADE* Handsaw is designed for the plumber, electrician, and all professional general contractors. The unique design allows it to cut the following: fiberglass panels, PVC, ABS & CPVC plastic pipe, nail embedded wood, wallboard, brass and copper tubing, paneling and general purpose wood cutting.

#180	23-1/2" 59.69 cm	Boxed	5	5 lbs. - 2.3 kg
------	---------------------	-------	---	-----------------

REPLACEMENT BLADES FOR #180 PVC SAW*

#181	18" Blade 45.72 cm Blade	Boxed	5	3 lbs. - 1.4 kg
------	-----------------------------	-------	---	-----------------

*NOTE: Blades are considered expendable material and therefore are not covered by the Warranty.

PLUMB-PRO QUALITY TOOLS PLASTIC PIPE CUTTERS

CATEGORY 14



“SNAPPER” TUBING CUTTER* High quality cutter for cutting plastic tubing, PVC, CPVC, polyethylene pipe and rubber hose through 1-1/4" (31.8 mm). Replaceable blade is made of stainless steel.

STOCK CODE	SIZE	CONTAINER	ITEMS/CASE	CASE WEIGHT
#166	1" - 25.4 mm	Bagged & Boxed	10	5 lbs. - 2.3 kg

REPLACEMENT BLADE WITH PIN FOR #166 “SNAPPER” TUBING CUTTER* Made of stainless steel.

#167	1" - 25.4 mm	Bagged & Boxed	5	1 lb. - 0.5 kg
------	--------------	----------------	---	----------------



“MONGOOSE” 1" (25.4 mm) PLASTIC PIPE RATCHET CUTTER* Top quality professional ratchet cutter cuts PVC, CPVC, ABS, and other plastic pipe and tubing through 1" (25.4 mm). Heavy duty steel construction with replaceable stainless steel blade.

#15	1" - 25.4 mm	Bagged & Boxed	5	4 lbs. - 1.8 kg
-----	--------------	----------------	---	-----------------

REPLACEMENT BLADE FOR #15 “MONGOOSE”* Stainless steel blade with ratchet plate attached.

#16	1" - 25.4 mm	Bagged & Boxed	5	1 lb. - 0.5 kg
-----	--------------	----------------	---	----------------

REPLACEMENT SPRING SET FOR #15 “MONGOOSE”*

#91	3 Springs per Bag 5 Bags per Case	Bagged & Boxed	5	1 lb. - 0.5 kg
-----	--------------------------------------	----------------	---	----------------

COMPLETE REPAIR KIT - REPLACEMENT BLADE/SPRING SET FOR #15* “MONGOOSE”

#16-KIT	1 Each per Bag #16 Blade & #91 Springs	Bagged & Boxed	5	1 lb. - 0.5 kg
---------	---	----------------	---	----------------



“BADGER” 1-1/4" (31.8 mm) PLASTIC PIPE RATCHET CUTTER* Top quality professional ratchet cutter cuts PVC, CPVC, ABS and other plastic pipe and tubing through 1-1/4" (31.8 mm). Heavy duty steel construction with replaceable stainless steel blade.

#127	1-1/4" - 31.8 mm	Bagged & Boxed	3	3 lbs. - 1.4 kg
------	------------------	----------------	---	-----------------

REPLACEMENT BLADE FOR #127 “BADGER”* Stainless steel blade.

#128	1-1/4" - 31.8 mm	Bagged & Boxed	3	1 lb. - 0.5 kg
------	------------------	----------------	---	----------------

REPLACEMENT SPRING SET FOR #127 “BADGER”*

#129	3 Springs per Bag 3 Bags per Case	Bagged & Boxed	3	1 lb. - 0.5 kg
------	--------------------------------------	----------------	---	----------------

COMPLETE REPAIR KIT - REPLACEMENT BLADE/SPRING SET FOR #127 “BADGER”*

#128-KIT	1 Each per Bag #128 Blade & #129 Springs	Bagged & Boxed	3	1 lb. - 0.5 kg
----------	---	----------------	---	----------------



“SABERTOOTH” 1-1/4" (31.8 mm) O.D. PLASTIC PIPE RATCHET CUTTER* Top quality professional ratchet cutter cuts PVC, CPVC, ABS and other plastic conduit and tubing through 1-1/4" (31.8 mm) O.D. V Blade is ideal for thin wall pipe.

#38	1-1/4" - 31.8 mm	Bagged & Boxed	3	3 lbs. - 1.4 kg
-----	------------------	----------------	---	-----------------

REPLACEMENT BLADE FOR #38 “SABERTOOTH”*

#39	1-1/4" - 31.8 mm	Bagged & Boxed	3	1 lb. - 0.5 kg
-----	------------------	----------------	---	----------------

REPLACEMENT SPRING SET FOR #38 “SABERTOOTH”*

#40	3 Springs per Bag 2 Bags per Case	Bagged & Boxed	3	1 lb. - 0.5 kg
-----	--------------------------------------	----------------	---	----------------

COMPLETE REPAIR KIT - REPLACEMENT BLADE/SPRING SET FOR #38 “SABERTOOTH”*

#39-KIT	1 Each per Bag #39 Blade, #40 Springs	Bagged & Boxed	3	1 lb. - 0.5 kg
---------	--	----------------	---	----------------



*NOTE: Blades and Springs are considered expendable materials and therefore are not covered by the Warranty.



"BARRACUDA" 1-1/2" (38.1 mm) PLASTIC PIPE RATCHET CUTTER*

Top quality professional ratchet cutter cuts PVC, CPVC, ABS and other plastic conduit and tubing through 1-1/2" (38.1 mm). Heavy duty steel construction with replaceable stainless steel blade.

STOCK CODE	SIZE	CONTAINER	ITEMS/CASE	CASE WEIGHT
#130	1-1/2" - 38.1 mm	Bagged & Boxed	2	6 lbs. - 2.7 kg

REPLACEMENT BLADE FOR #130 "BARRACUDA"* Stainless steel blade.

#131	1-1/2" - 38.1 mm	Bagged & Boxed	2	1 lb. - 0.5 kg
------	------------------	----------------	---	----------------

REPLACEMENT SPRING SET FOR #130 "BARRACUDA"*

#132	3 Springs per Bag, 2 Bags per Case	Bagged & Boxed	2	1 lb. - 0.5 kg
------	------------------------------------	----------------	---	----------------

COMPLETE REPAIR KIT - REPLACEMENT BLADE/SPRING SET FOR #130 "BARRACUDA"*

#133-KIT	1 Each per Bag. #131 Blade, #132 Springs	Bagged & Boxed	2	1 lb. - 0.5 kg
----------	---	----------------	---	----------------



"PIRAÑA" ONE HANDED 2" (50.8 mm) PLASTIC PIPE RATCHET CUTTER*

Top quality professional ratchet cutter cuts all types of plastic pipe and conduit through 2" (50.8 mm) in diameter. One handed operation and heavy duty steel construction.

#20	2" - 50.8 mm	Bagged & Boxed	2	4 lbs. - 1.8 kg
-----	--------------	----------------	---	-----------------

REPLACEMENT BLADE FOR #20 "PIRAÑA"*

#21	2" - 50.8 mm	Bagged & Boxed	2	2 lbs. - 0.9 kg
-----	--------------	----------------	---	-----------------

REPLACEMENT SPRING SET FOR #20 "PIRAÑA"*

#22	2 Springs per Bag, 5 Bags per Case	Bagged & Boxed	5	1 lb. - 0.5 kg
-----	------------------------------------	----------------	---	----------------

COMPLETE REPAIR KIT - REPLACEMENT BLADE/SPRING SET FOR #20 "PIRAÑA"*

#23-KIT	1 Each per Bag #21 Blade, #22 Springs	Bagged & Boxed	2	2 lbs. - 0.9 kg
---------	--	----------------	---	-----------------



"VIPER" 2" (50.8 mm) PLASTIC PIPE RATCHET CUTTER*

Top quality professional ratchet cutter cuts PVC, CPVC, ABS and other plastic pipe and tubing through 2" (50.8 mm). Heavy duty steel construction with quality replaceable stainless steel blade.

#17	2" - 50.8 mm	Bagged & Boxed	1	3 lbs. - 1.4 kg
-----	--------------	----------------	---	-----------------

REPLACEMENT BLADE FOR #17 "VIPER"*

#18	2" - 50.8 mm	Bagged & Boxed	1	1 lb. - 0.5 kg
-----	--------------	----------------	---	----------------

REPLACEMENT SPRING SET FOR #17 "VIPER"*

#92	2 Springs per Bag, 5 Bags per Case	Bagged & Boxed	5	1 lb. - 0.5 kg
-----	------------------------------------	----------------	---	----------------

COMPLETE REPAIR KIT - REPLACEMENT BLADE/SPRING SET FOR #17 "VIPER"*

#19-KIT	1 Each per Bag #18 Blade, #92 Springs	Bagged & Boxed	1	1 lb. - 0.5 kg
---------	--	----------------	---	----------------



"GATOR BITE" 2-1/2" (63.5 mm) PLASTIC PIPE RATCHET CUTTER*

Top quality professional ratchet cutter cuts all types of plastic pipe and conduit through 2-1/2" (63.5 mm) in diameter. Heavy duty steel construction.

#205	2-1/2" - 63.5 mm	Boxed	1	4 lbs. - 1.8 kg
------	------------------	-------	---	-----------------

REPLACEMENT BLADE FOR #205 "GATOR BITE"*

#206	2-1/2" - 63.5 mm	Bagged & Boxed	1	2 lbs. - 0.9 kg
------	------------------	----------------	---	-----------------

REPLACEMENT SPRING SET FOR #205 "GATOR BITE"*

#207	2 Springs per Bag, 5 Bags per Case	Bagged & Boxed	5	1 lb. - 0.5 kg
------	------------------------------------	----------------	---	----------------

COMPLETE REPAIR KIT - REPLACEMENT BLADE/SPRING SET FOR #205 "GATOR BITE"*

#208-KIT	1 Each per Bag #206 Blade, #207 Springs	Bagged & Boxed	1	2 lbs. - 0.9 kg
----------	--	----------------	---	-----------------

Cutters are packaged in clear plastic point of purchase display pouches suitable for hanging on a display. (Excluding #205)
*NOTE: Blades and springs are considered expendable materials and therefore are not covered by the Warranty

PLUMB-PRO QUALITY TOOLS INTERNAL PIPE CUTTERS & PIPE REAMERS

CATEGORY 14

INTERNAL PIPE CUTTERS

"RIPPER" CARBIDE BLADE INTERNAL PLASTIC PIPE CUTTER* 2 each 1-1/2" (3.81 cm) diameter fiber carbide blades per bag with 3" (7.62 cm) long zinc plated shaft that fits 1/4" (.64 cm) or 3/8" (.95 cm) drills. For cutting 2" (5.08 cm) or larger PVC or ABS plastic pipe.

WARNING - Do not operate cutter in reverse.

STOCK CODE	SIZE	CONTAINER	ITEMS/CASE	CASE WEIGHT
#192	1-1/2" - 3.81 cm	Bagged & Boxed	10	1 lb. - 0.5 kg

REPLACEMENT BLADES FOR #192* Fiber carbide blades.

#154	1-1/2" diameter - 3.81 cm 3 Blades per Bag 10 Bags per Case	Bagged & Boxed	10	1 lb. - 0.5 kg
------	---	----------------	----	----------------

"ZIPPY" METAL BLADE INTERNAL PLASTIC PIPE CUTTER* 1 each 1-1/2" (3.81 cm) diameter metal shear blade per bag with 4" (10.16 cm) long zinc plated shaft that fits 1/4" (.64 cm) or 3/8" (.95 cm) drills. For cutting 2" (5.08 cm) or larger PVC or ABS plastic pipe.

WARNING - Do not operate cutter in reverse.

#150	1-1/2" - 3.81 cm	Bagged & Boxed	10	1 lb. - 0.5 kg
------	------------------	----------------	----	----------------

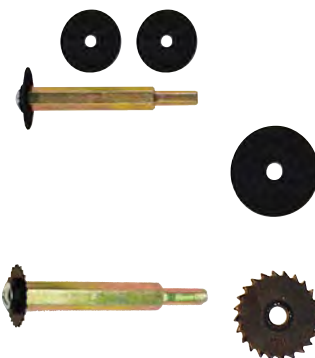
"ZIPPY XL" LONG SHAFT METAL BLADE INTERNAL PLASTIC PIPE CUTTER* 1 each 1-1/2" (3.81 cm) diameter metal shear blade per bag with 7-1/2" (19.05 cm) long zinc plated shaft that fits 1/4" (.64 cm) or 3/8" (.95 cm) drills. For cutting 2" (5.08 cm) or larger PVC or ABS plastic pipe.

WARNING - Do not operate cutter in reverse.

#152	1-1/2" - 3.81 cm	Bagged & Boxed	5	1 lb. - 0.5 kg
------	------------------	----------------	---	----------------

REPLACEMENT BLADES FOR #150 and #152* Metal shear blades.

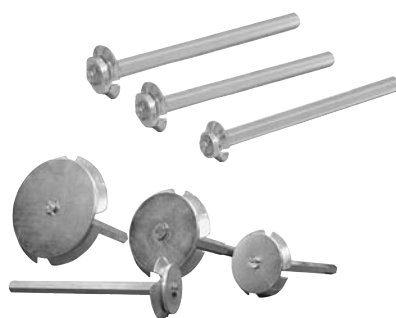
#151	1-1/2" diameter - 3.81 cm 2 Blades per Bag 10 Bags per Case	Bagged & Boxed	10	1 lb. - 0.5 kg
------	---	----------------	----	----------------



PIPE FITTING REAMERS

"SOCKET RELIEVER" PIPE FITTING REAMERS Removes schedule 40 plastic pipe. Cuts ABS or PVC DWV pipe below slab. Fits 1/2" variable speed power drill.

#118	1/2" - 1.27 cm	Bagged & Boxed	1	1 lb. - 0.5 kg
#119	3/4" - 1.91 cm	Bagged & Boxed	1	1 lb. - 0.5 kg
#120	1" - 2.54 cm	Bagged & Boxed	1	1 lb. - 0.5 kg
#123	1-1/2" - 3.81 cm	Bagged & Boxed	1	1 lb. - 0.5 kg
#124	2" - 5.08 cm	Bagged & Boxed	1	1 lb. - 0.5 kg
#125	3" - 7.62 cm	Bagged & Boxed	1	1 lb. - 0.5 kg
#126	4" - 10.16 cm	Bagged & Boxed	1	1 lb. - 0.5 kg



PLASTIC PIPE BEVELERS

PLUMB-PRO® PLASTIC PIPE BEVELER is a professional grade tool that significantly reduces the time needed to bevel SDR Sewer Pipe, IPS/Sch. 40 and C900/C909 PVC Water Distribution Pipe. Fabricated with a welded arbor to ensure core strength. Fits larger cordless, power, or right angle drills.

Made in the U.S.A.

PLUMB-PRO® BEVELER FOR IPS/SCH.40 PIPE

#PBI4	4" - 10.16 cm	Boxed	1	1 lb. - 0.5 kg
#PBI6	6" - 15.24 cm	Boxed	1	2 lbs. - 0.9 kg

PLUMB-PRO® BEVELER FOR SDR DRAIN PIPE

#PBS4	4" - 10.16 cm	Boxed	1	1 lb. - 0.5 kg
#PBS6	6" - 15.24 cm	Boxed	1	2 lbs. - 0.9 kg
#PBS8	8" - 20.32 cm	Boxed	1	3 lbs. - 1.4 kg

PLUMB-PRO® BEVELER FOR C900/C909 PIPE

#PBC4	4" - 10.16 cm	Boxed	1	1 lb. - 0.5 kg
#PBC6	6" - 15.24 cm	Boxed	1	2 lbs. - 0.9 kg
#PBC8	8" - 20.32 cm	Boxed	1	3 lbs. - 1.4 kg



*NOTE: Blades are considered expendable materials and therefore are not covered by the Warranty.

CATEGORY 15

MARKING PAINT, MARKING GUNS, TURF COLORANT & TRACER DYES



U.S. Design Patent US D715, 409 S

MARKING PAINT & MARKING GUNS

PRO-STRIPE APWA INVERTED MARKING PAINT A heavy duty, industrial paint with a water base formula that is fast drying, durable and non-clogging. Use in marking construction, excavation sites, underground utilities, landscaping, etc. Will not wash away or damage grass. Lead Free. **Made in the U.S.A.**

STOCK CODE	SIZE	CONTAINER	ITEMS/CASE	CASE WEIGHT
#MP-BLACK	17 oz. - 503 ml	Boxed	12	19 lbs. - 8.6 kg
#MP-BLUE	17 oz. - 503 ml	Boxed	12	19 lbs. - 8.6 kg
#MP-CLOUD WHITE	17 oz. - 503 ml	Boxed	12	19 lbs. - 8.6 kg
#MP-GREEN	17 oz. - 503 ml	Boxed	12	19 lbs. - 8.6 kg
#MP-HOT ORANGE	17 oz. - 503 ml	Boxed	12	19 lbs. - 8.6 kg
#MP-PINK	17 oz. - 503 ml	Boxed	12	19 lbs. - 8.6 kg
#MP-RED	17 oz. - 503 ml	Boxed	12	19 lbs. - 8.6 kg
#MP-YELLOW	17 oz. - 503 ml	Boxed	12	19 lbs. - 8.6 kg

PRO-STRIPE ATHLETIC MARKING PAINT Stripe any athletic field in minutes! Formulated to last long, remain bright and not harm grass or any sports field covering. Get up to 1/2 mile of 3-inch wide stripe per case. **Made in the U.S.A.**

#PSA-WHITE	18 oz. - 532 ml	Boxed	12	20 lbs. - 9.07 kg
#PSA-HOT ORANGE	18 oz. - 532 ml	Boxed	12	20 lbs. - 9.07 kg
#PSA-YELLOW	18 oz. - 532 ml	Boxed	12	20 lbs. - 9.07 kg
#PSA-RED	18 oz. - 532 ml	Boxed	12	20 lbs. - 9.07 kg
#PSA-NAVY BLUE	18 oz. - 532 ml	Boxed	12	20 lbs. - 9.07 kg

PRO-STRIPER INVERTED AEROSOL MARKING MACHINE Solid steel frame with fold-down handle. 10" wheels make it easy to maneuver. **For use only with Pro-Stripe Athletic Marking Paint (PSA).**

PRO-STRIPER	Universal	Boxed	1	22 lbs. - 10.0 kg
-------------	-----------	-------	---	-------------------

PRO-STRIPER MARKING GUN A compact and lightweight tool used to apply marking paint in a wide range of marking applications.

#704	Universal	Boxed	1	1 lb. - 0.5 kg
------	-----------	-------	---	----------------

PRO-STRIPER MARKING WAND A lightweight tool used to apply marking paint in a wide range of marking applications. Approximately 3 feet in length to make application of paint easy.

#705	Universal	Boxed	1	3 lbs. - 1.4 kg
------	-----------	-------	---	-----------------

LEAK TRACER DYES

FAST-TRAC YELLOW/GREEN LEAK TRACER DYE A highly concentrated leak inspection dye that dissolves rapidly in water and provides a vivid fluorescent yellow/green color detectable in murky water, sewage or effluent. **Made in the U.S.A.**

LTDG16	16 oz. - 473 ml	Plastic Container	12	15 lbs. - 6.8 kg
LTDG1	Gallon - 3.785 L	Paint Jug w/ Spout	4	37 lbs. - 16.8 kg

FAST-TRAC RED LEAK TRACER DYE A highly concentrated leak inspection dye that dissolves rapidly in water and provides a vivid fluorescent red color detectable in murky water, sewage or effluent. **Made in the U.S.A.**

LTDR16	16 oz. - 473 ml	Plastic Container	12	15 lbs. - 6.8 kg
LTDR1	Gallon - 3.785 L	Paint Jug w/ Spout	4	37 lbs. - 16.8 kg

FAST-TRAC BLUE LEAK TRACER DYE A highly concentrated leak inspection dye that dissolves rapidly in water and provides a vivid non-fluorescent blue color detectable in murky water, sewage or effluent. **Made in the U.S.A.**

LTDB16	16 oz. - 473 ml	Plastic Container	12	15 lbs. - 6.8 kg
LTDB1	Gallon - 3.785 L	Paint Jug w/ Spout	4	37 lbs. - 16.8 kg

PIPE VENT SCREENS

PIPE VENT SCREENS Professionally made to prevent unwanted animals, leaves and debris from entering HVAC and plumbing vent pipe. Fabricated with Schedule 40 PVC and high quality Type 304 Stainless Steel Screen. No tools or glue are required for assembly. Simply press the vent screen into an existing fitting (fitting not included) to seal out the pests and unwanted debris. The patented condensate channel allows for proper drainage that prevents a buildup of moisture and potential freezing of the screen. **Made in the U.S.A.**

#VS15	1-1/2" Pipe Vent Screen	Boxed	10	1 lb. - 0.5 kg
#VS2	2" Pipe Vent Screen	Boxed	10	1 lb. - 0.5 kg
#VS3	3" Pipe Vent Screen	Boxed	10	1 lb. - 0.5 kg
#VS4	4" Pipe Vent Screen	Boxed	10	1 lb. - 0.5 kg
#VS6	6" Pipe Vent Screen	Boxed	5	1 lb. - 0.5 kg

CPVC PIPE VENT SCREENS

#VSC2	2" CPVC Vent Screen	Boxed	10	1 lb. - 0.5 kg
#VSC3	3" CPVC Vent Screen	Boxed	10	1 lb. - 0.5 kg
#VSC4	4" CPVC Vent Screen	Boxed	10	1 lb. - 0.5 kg

CANS Empty screw top cans without caps. For caps, see below. **Made in the U.S.A.**

STOCK CODE	SIZE	CONTAINER	ITEMS/CASE	CASE WEIGHT
#CHP	1/2 Pint - 237 ml	Boxed	24	5 lbs. - 2.3 kg
#CPP	Pint - 473 ml	Boxed	12	5 lbs. - 2.3 kg
#CQ	Quart - .95 L	Boxed	12	5 lbs. - 2.3 kg
#CQ100	Quart - .95 L	Boxed	100	38 lbs. - 17.2 kg

WIDE MOUTH GALLON CAN WITH SCREW TOP LID Opening of can is 2-7/8" (7.32 cm). **Made in the U.S.A.**

#CGW	Gallon - 3.785 L	Boxed	6	10 lbs. - 4.5 kg
------	------------------	-------	---	------------------

DAUBER SCREW CAPS Standard dauber and cap. For use on empty screw top cans listed above. **Made in the U.S.A.**

#DP	Pint - 473 ml	Boxed	50	2 lbs. - 0.9 kg
#DPA	Pint - 473 ml	Boxed	12	1 lb. - 0.5 kg
#DQ	Quart - .95 L	Boxed	50	3 lbs. - 1.4 kg
#DQA	Quart - .95 L	Boxed	12	1 lb. - 0.5 kg

DAUBER SCREW CAPS 1/2" dauber and cap. For use with CPVC yellow medium bodied low VOC cement and empty screw top cans listed above. **Made in the U.S.A.**

#DPS	Pint - 473 ml	Boxed	12	1 lb. - 0.5 kg
------	---------------	-------	----	----------------

GALLON CAN ROLLER Applicator with cap - fits wide and standard mouth size.

#CGWR	12" - 30 cm	Boxed	12	4 lbs. - 1.8 kg
-------	-------------	-------	----	-----------------

GALLON CAN SWAB Applicator with cap - fits wide and standard mouth size.

#CGWS	12" - 30 cm	Boxed	12	2 lbs. - .91 kg
-------	-------------	-------	----	-----------------

ROUND COTTON SWAB APPLICATOR Wire handle swab. Total length 11" (28 cm). For applying large quantities of gasket lubricant or PVC cements and cleaners to pipe and fittings.

#GLS	11" x 4" - 28 cm x 10 cm	Boxed	50	7 lbs. - 3.2 kg
#GLSA	11" x 4" - 28 cm x 10 cm	Boxed	12	2 lbs. - 0.9 kg

ACID & FLUX BRUSH Metal handle.

#BR1	3/8" Wide x 6" Long .95 cm Wide x 15.24 cm Long	Boxed	144	3 lbs. - 1.4 kg
------	--	-------	-----	-----------------

PURE BRISTLE BRUSHES Paint brush style. Wood handle.

#PB1	1" - 2.54 cm	Boxed	36	2 lbs. - 0.9 kg
#PB2	2" - 5.08 cm	Boxed	24	2 lbs. - 0.9 kg
#PB3	3" - 7.62 cm	Boxed	24	3 lbs. - 1.4 kg
#PB4	4" - 10.16 cm	Boxed	12	2 lbs. - 0.9 kg

SPRAYERS Trigger pump plastic sprayer with adjustable spray nozzle for use with quart leak detector bottles. **Made in the U.S.A.**

#SPRL	Trigger Pump Sprayer for Quart (.95 L) Bottles	Boxed	6	1 lb. - 0.5 kg
-------	---	-------	---	----------------





MAGNETIC TORPEDO LEVEL 9" Black, high impact plastic frame. Magnetic edge frees hands. Vials read plumb, level, 1/4" per 1 foot plumbing code slope and 45° top read window. V-grooved working edge fits on pipe or conduit.

STOCK CODE	SIZE	CONTAINER	ITEMS/CASE	CASE WEIGHT
#12	9" - 23 cm	Bagged & Boxed	5	2 lbs. - 0.9 kg

METAL STUD INSULATORS Protects copper and polybutylene pipe from sharp edges of metal studs. Snaps into a 1-11/32" (3.41 cm) hole punched by **#398 SUPER STUD PUNCH**. Fits all 1/2" (1.27 cm), 3/4" (1.91 cm) and 1" (2.54 cm) copper or polypipe tubing. For use on all metal studs 18 gauge or lighter. Patented offset hole makes for better pipe alignment. Sold in full case quantities only. **Made in the U.S.A.**

#24	1/2" - 1.27 cm	Bagged & Boxed	100	1 lb. - 0.5 kg
#25	3/4" - 1.91 cm	Bagged & Boxed	100	1 lb. - 0.5 kg
#26	1" - 2.54 cm	Bagged & Boxed	100	1 lb. - 0.5 kg

SUPER STUD PUNCH Extended throat. Cuts 3-1/2" (8.89 cm) from edge. Cuts heavy 18 gauge steel. Lightweight high strength aluminum alloy. Hole size 1-11/32" (3.41 cm). Offset handle gets into tight places easier. Better leverage for easier punching. Non-slip rubber grips. **Made in the U.S.A.**

#398	1-11/32" Hole Size 3.41 cm Hole Size	Boxed	1	7 lbs. - 3.2 kg
------	---	-------	---	-----------------

4 - WAY VALVE KEY For stop cocks, sill cocks and valves when handles have been removed. Fits 1/4" (.64 cm), 9/32" (.71 cm), 5/16" (.79 cm), 11/32" (.86 cm). Polished chrome finish.

#33	Universal	Bagged & Boxed	5	3 lbs. - 1.4 kg
-----	-----------	----------------	---	-----------------

MEASURING TAPE High impact yellow case. Tough tip stainless steel blade protector with 3 rivets virtually eliminates tip breakage. Three color blade with bold, precise numbers for easier reading.

#301	1" x 25' - 2.54 cm x 7.62 m	Bagged & Boxed	6	6 lbs. - 2.7 kg
------	-----------------------------	----------------	---	-----------------

YELLOW MASON TWINE* No. 18 - 275 ft. (84 m). Unaffected by cement. Rot proof. High strength for use as chalk line, plumb line, lead line. Rolls individually wrapped in clear plastic.

#46	No. 18 - 275' (84 m) Long	Boxed	12	5 lbs. - 2.3 kg
-----	---------------------------	-------	----	-----------------

WIRE PULLING TWINE* Polypropylene twisted film. 1-Ply x 6500'; average break strength 200 lbs. (90.7 kg). Plastic bucket dispenser, made from high strength plastic.

#49	1-Ply x 6500' (200 lbs.) 1-Ply x 1981 m (90.7 kg)	Pail w/ Handle	1	12 lbs. - 5.4 kg
-----	--	----------------	---	------------------

PVC PIPE WRAP TAPE* High quality polyethylene pipe wrap tape. All weather, moisture proof black pipe wrap tape. UPC listed.

#143	10 mil x 2" x 100' 10 mil x 5.08 cm x 30.5 m	Boxed	36	40 lbs. - 18.1 kg
------	---	-------	----	-------------------

YELLOW WARNING BARRIER "CAUTION" TAPE* Durable 3 mil thick PVC plastic tape, 3" (7.62 cm) wide. Bright yellow with **BOLD BLACK PRINT - "CAUTION CAUTION"**.

#367	1000' Long - 305 m Long	Boxed	8	36 lbs. - 16.3 kg
#368	300' Long - 91 m Long	Boxed	10	9 lbs. - 4.1 kg

*NOTE: Mason twine, wire pulling twine, pipe wrap tape and caution tape are considered expendable materials and therefore are not covered by the Warranty.



Stock Code DISPLAY2

ORDER \$2400.00 NET OR MORE AND RECEIVE A 2 FOOT POINT-OF-PURCHASE DISPLAY RACK FREE!

This light beige display rack contains three shelves and one base shelf for displaying **WHITLAM** products with an eye-catching two color sign. It is available full freight prepaid and allowed, when ordered with \$2400 NET billing value.

- Limit 1 free display rack per location.

Display measures:

24" (61 cm) long

54" (137 cm) high

18" (46 cm) deep

Extra shelves: \$100.00 each

Extra display: \$175.00 each

Display ships with:

10" adjustable shelves (2 each)

12" adjustable shelf (1 each)

12" base shelf (1 each)



Stock Code #272

RECEIVE A FREE SOIL PROBE DISPLAY RACK WITH ORDERS OF 24 OR MORE PROBES!

This Point-of-Purchase Probe Display will display up to 24 - 48" (1.2 m) and/or 60" (1.5 m) Soil Probes. Display must be ordered on same order as the probes to qualify.

- Limit 1 display per wholesaler location.

- Stock Code #272



Stock Code DISPLAY4

ORDER \$3000.00 NET OR MORE AND RECEIVE A 4 FOOT GONDOLA DISPLAY RACK FREE!

This light beige display rack contains four shelves and one base shelf for displaying **WHITLAM** products with an eye-catching two color sign. It is available full freight prepaid and allowed, when ordered with \$3000 NET billing value.

- Limit 1 free display rack per location.

Display measures:

48" (122 cm) long

54" (137 cm) high

18" (46 cm) deep

Extra shelves: \$125.00 each

Extra display: \$225.00 each

Display ships with:

10" adjustable shelves (3 each)

12" adjustable shelf (1 each)

12" base shelf (1 each)



FREE FLOW-AIDE POINT-OF-PURCHASE DISPLAY WITH PURCHASE OF 6 EA. FLOW-KITS AND 16 EA. FLOW32

This free standing point-of-purchase display assists in promoting the FLOW-AIDE descaler kit and FLOW-AIDE biodegradable chemical solution with its eye catching header and solid blue base. The self talking header highlights the multiple uses/advantages of this top quality chemical descaler.

Display measures:

28" (71 cm) long

50" (127 cm) high

14" (36 cm) deep

Stock Code **FLOW-DISPLAY**

Contains: 6 each **FLOW-KIT**, 16 each **FLOW32**

Stock Code **FLOW-DISPLAYC**

Contains: 6 each **FLOW-KITC***, 16 each **FLOW32C***

*Bilingual Label: French and English

J.C. WHITLAM SHIPPING, SALE AND WARRANTY TERMS

D.O.T. CLASSIFIED SHIPPING TERMS:

North American shipments containing plastic pipe cements and cleaners through quart size will be shipped Limited Quantity; gallon size requires the proper UN number on bills of lading and a flammable red label on all cartons. All cartons on shipments to overseas countries are required to have the proper UN Number on bills of lading and a flammable red label on all cartons. North American shipments containing Talon Drain Opener 1 lb. and 2 lb. sizes will be shipped Limited Quantity; All cartons on shipments to overseas countries are required to have the proper UN number on bills of lading and a corrosive warning label on all cartons. North American shipments containing NOW! and QUIK! 32 oz. size will be shipped Limited Quantity; sizes over 32 oz. are required to have the proper UN Number on bills of lading and a corrosive warning label on all cartons. All cartons on shipments to overseas countries are required to have the proper UN number on bills of lading and a corrosive warning label on all cartons. North American shipments containing Sludge•B•Gone, 32 oz. size, will be shipped Limited Quantity; gallon size requires the proper UN number on bills of lading and a flammable red label on all cartons. All cartons on shipments to overseas countries are required to have the proper UN number on bills of lading and a flammable red label on all cartons.

CARRIERS:

J.C. Whitlam Manufacturing Company reserves the right to choose freight carriers on all prepaid shipments.

PRIOR NOTIFICATION:

Charges by a carrier for notification prior to delivery, will be the responsibility of the customer.

PALLETIZATION:

J.C. Whitlam Manufacturing Company will palletize and stretch-wrap. Customer will be notified of any additional charges prior to shipment. When receiving shipment, count and sign for individual cartons. All pallets shipped as individual cartons.

SHORTAGES & DAMAGE CLAIMS:

Examine shipments on receipt for shortages or damage and file claims immediately with carrier. All damages or shortages must be noted on the carrier's bill of lading when receiving shipment. We will assist you in filing claims. Bills of lading covering shipments are an acknowledgment by the carrier of receipt of product in apparent good condition. If shipment is not delivered to you in good condition, it is your responsibility to make a claim against the carrier. Always have the shortage or damage noted by the delivery driver on both the drivers and your copy of the delivery receipt with the drivers signature. These

notations should also appear on the freight bill. Make your claim promptly to the carrier, for the carrier will not consider a claim unless presented within ninety days from date of delivery. If the shipment is to be rejected, notify J.C. Whitlam Manufacturing Company. If you accept from a carrier a shipment that is short or damaged, without having proper inspections and notations made, you do so at your own risk. If there is concealed damage, call the carrier's representative or agent to view the damage and have them mark the freight bill. Also obtain a copy of their inspection report. Concealed loss or damage, discovered after delivery of shipment, must be reported to carrier's agent or representative immediately upon discovery, but no later than 15 days after receipt. Claims for loss or damage can not be deducted from our invoice, nor payment of invoice withheld awaiting adjustment of such claims.

LIMITED GUARANTEED SALE AND RETURN POLICY:

No returns accepted without prior authorization being RECEIVED from our CORPORATE OFFICES in Wadsworth, Ohio. When Authorization is given, an authorization number will be issued which must appear on shipping documents. A trucking company will be designated which must be used. Any deviation from these requirements may cause the shipment to be refused. Products may be returned within two years of purchase date except for plastic solvent cements and cleaners, which may be returned within twelve months of purchase date. Freight must be paid by purchaser and returned in resalable condition. A repacking charge may be applied.

STANDARD PACKAGING: WHITLAM CHEMICAL AND PLUMB-PRO DIVISION PRODUCTS ARE SHIPPED IN FULL CASE QUANTITIES ONLY.

WARRANTY: J.C. WHITLAM MANUFACTURING CO. guarantees Whitlam and Plumb-Pro products to be in compliance with acceptable commercial standards for material and workmanship for a period of one (1) year from date of purchase, unless noted in price catalog. Complete products must be returned for credit or replacement.

This sheet supersedes all previous price catalogs. Prices and specifications subject to change without notice. Our liability on all products not to exceed amount of invoice value.



J.C. WHITLAM MANUFACTURING COMPANY THEN AND NOW

THE WHITLAM STORY

First, a little nostalgia. It can be hard to grasp how different life was in the year 1900. The light bulb, telephone and automobile were still new; and airplanes, moving pictures, and even paper clips were still only inventors' dreams.

But the world wasn't perfect. As shocking as it sounds, plumbers of that time use poisonous lead pastes to seal pipes.

A solution was at hand. In 1900, J.C. Whitlam II solved the problem with an invention he called "Tyte-Unyte®," the world's first non-poisonous thread compound. This formula was so enduring that today, it is still the standard of the plumbing industry.

One thing led to another. Tyte-Unyte® led to Select-Unyte, Blue Magic, Pack-Unyte, and many other products, including our new TALON Pipe Thread Compound. Today, J.C. Whitlam and its divisions, Whitlam Chemical and Plumb-Pro Tools, provide hundreds of sealing compounds, lubricants, tape, packing, tools and other products for professionals in plumbing, heating, refrigeration and irrigation.



Whitlam today. Our companies are stronger than ever, with consistent quality production, innovation in chemical engineering and reliable customer service. Together, these make Whitlam a source you can trust for a long time to come.

When you consider the long history of Whitlam Manufacturing, you can be sure we will be here for you, just as we have been for more than 100 years.

Reliable service. We have always provided reliable service, but today we are dedicated, more than ever, to providing these services:

- convenient, friendly customer relationships
- fast, cost-conscious delivery options
- complete product information
- precise test data

Engineering expertise. You should also know that the product quality you depend on is based on chemical engineering expertise. We maintain quality control by testing products during manufacture, assure that packaging and shipping conditions are correct for the product, and explore new ways to bring you the next generation of products.

Innovative solutions and private labels. We continue to develop custom solutions and to offer private labeling to meet your specific needs. After all, we were founded on innovation, and its spirit has never left us.

Sincerely,
Jack C. Whitlam IV
President



INDEX

INDEX BY PRODUCT

PRODUCT	PAGE
ABRASIVES	13
ABS SOLVENT CEMENTS	5
ACID BRUSH	33
ALL PURPOSE CEMENT	5
ANTI-FREEZE	20
ANTI-SEIZE COMPOUNDS	9
BOILER PRODUCTS	21
BREAK-A-WAY BOLTS	17
BRUSHES	13 & 33
CABLE SAWS	28
CANS	33
CAULKING GUNS	13
CAULKS	12
CAUTION TAPE	34
CEMENT CHARTS	6 - 7
CHANNELOCK®	26
CLEAR CLEANER	6
CONCRETE SEALER	11
CPVC SOLVENT CEMENTS	5
CUTTING OILS	11
DAUBERS	33
DESCALER/DESCALER KIT	15
DISPLAYS	35
DRAIN CLEANERS	16
DRAIN CLEANERS	16
DRAINPIPE ADHESIVE	6
EPOXY PUTTY	10
FITTING BRUSHES	13
FLANGE BOLTS	17
FLASHING CEMENT	11
FLOW DISPLAY	15 & 35
FLUX	14
FLUX BRUSH	33
FUEL OIL ADDITIVE	21
FURNACE CEMENT	21
GAS LINE TAPE	10
GASKET LUBE PASTE	14
HACKSAWS AND BLADES	28
HAND CLEANERS	16
HAND WIPES	16

PRODUCT	PAGE
HEAT PROOF GREASE	14
HEATING PRODUCTS	20 - 21
HIGHSIDE CHEMICALS	22
HOSES	15
INSULATORS, METAL STUD	34
INTERNAL PIPE CUTTERS	31
LEAK DETECTOR	21
LEAK TRACER DYES	32
LEVELS	34
LONG NOSE PLIERS	26
MARKING GUN	32
MARKING MACHINE	32
MARKING WAND	32
MASON TWINE	34
MEASURING TAPE	34
METAL STUD PUNCH	34
METER KEYS	25
NO HUB TORQUE WRENCH	27
OILS	11
OPEN MESH CLOTH	13
PAINT	11 & 32
PAINT STYLE BRUSHES	33
PICK MATTOCK	23
PIPE CUTTERS	29 - 30
PIPE BEVELERS	31
PIPE FITTING REAMERS	31
PIPE GASKET LUBE	14
PIPE JOINT COMPOUNDS	8 - 9
PIPE JOINT LUBRICANT	14
PIPE PLIERS	26 - 27
PIPE WRAP TAPE	34
PLASTIC PIPE CUTTERS	29 - 30
PLIERS	26 - 27
PLUMBER'S PUTTY	10
PRIMERS	6
PTFE TAPES	10
PUMPS	15
PUTTY	10
PVC CEMENTS	3 - 6

PRODUCT	PAGE
PVC SAW	28
RATCHET WRENCH	26
RED DEVIL PRODUCTS	12
SAND CLOTH	13
SAW BLADES	28
SAWS	28
SCREWDRIVERS	22
SILICONE GREASE	14
SHOVELS	24
SILICONE SEALANTS	12
SLEDGEHAMMERS	23
SOFT JAW WONDER PLIERS	27
SOFT TOUCH PLIERS	27
SOIL PROBE TIPS	25
SOIL PROBES	25
SPRAYERS	33
STRAPS	23
STUD PUNCH	34
SWABS	33
SWIMMING POOL WRENCH	27
"T-HANDLE" CABLE SAW	28
TALON TOWER OF TOWELS	16
TANK TO BOWL BOLT SETS	17
TAPE, PTFE	10
TELESCOPIC BASIN WRENCH	27
THREAD SEALANTS	8 - 9
TOILET FLANGE BOLTS	17
TRAP PRIMER	15
URINAL CLEANER	16
VALVE KEY, 4-WAY	34
VALVE WRENCHES, TELESCOPIC	25
VENT SCREENS	32
WATER HEATER ELEMENT WRENCH	27
WATER SOLUBLE FLUX	14
WATERLESS URINAL ODOR BLOCKER	15
WAX RINGS	18 - 19
WIRE PULLING TWINE	34
WRENCHES	26 - 27

INDEX BY STOCK CODE

**J. C. WHITLAM MFG. CO. MANUFACTURING
QUALITY CHEMICAL PRODUCTS SINCE 1900**

STOCK CODE	PAGE
AF - ANTI-FREEZE, SOLUTION	20
AL - ABS CEMENT	5
AP - ALL PURPOSE CEMENT	5
APR - ALL PURPOSE CEMENT	5
BA - BREAK-A-WAY TOILET BOLTS	17
BD - ASPHALT PAINT	11
BF - FLASHING CEMENT	11
BFC - FLASHING CEMENT	11
BSB - CONCRETE SEALER	11
BT - BOILER TREATMENT	21
C - CLEAR CLEANER	6
CF - COPPER FITTING, WIRE HANDLE BRUSHES	13
CP - COPPER FITTING, SOLID HANDLE BRUSHES	13
CPG - CPVC CEMENT, GRAY	5
CPL - CPVC CEMENT, YELLOW	5
CPV - CPVC CEMENT, ORANGE	5
CU - ANTI-SEIZE LUBRICANT	9
CU - ANTI-SEIZE LUBRICANT	9
DPA - DRAINPIPE ADHESIVE	6
EPS - EPOXY PUTTY	10
F520 - PTFE TAPE	10
FB - FLANGE BOLTS	17
FF - ANTI-FREEZE, CONCENTRATE	20

STOCK CODE	PAGE
FLOW-DESCALER	15
FLOW-COM	15
FLOW-DISPLAY	15
FLOW-KIT	15
FOS1RB - WAX RING, REGULAR WITH BOLTS	18
FOS1RB-D - WAX RING, REGULAR WITH BOLTS	18
FOS1RJ - WAX RING, REGULAR JUMBO	18
FOS1RP-D - WAX RING REGULAR WITH BOLT KIT	18
FOS1RU - WAX RING, REGULAR WITH URETHANE	19
FOS1SP-D - WAX RING, FLANGED WITH BOLTS	18
FOS1SJ - WAX RING, FLANGED JUMBO	18
FOS1SJB-D - WAX RING, FLANGED JUMBO WITH BOLTS	18
FOS1SU - WAX RING, FLANGED WITH URETHANE	19
FOS2U - URINAL GASKET WITH URETHANE	19
FP - FREEZE-POINT -100, ANTI-FREEZE, CONCENTRATE	20
GL - GRAY MEDIUM PVC CEMENT	3
GLP - GASKET LUBE	14
GT260 - GAS LINE PTFE TAPE	10
GT520 - GAS LINE PTFE TAPE	10
GWP - HAND CLEANER	16
HDP - HEAVY DUTY CLEAR PVC CEMENT	3
HDB - HEAVY DUTY BLUE PVC CEMENT	3
HDW - HEAVY DUTY WHITE PVC CEMENT	3
HPG - GREASE	14
HPL - CLEAR HEAVY BODIED PVC CEMENT	3
HS - HIGHSIDE CHEMICALS	22
HT - FURNACE CEMENT	21
IG - THREAD SEALANT	8
IR - IRRIGATION PVC CEMENT	4
JAO - BROWN SAND CLOTH	13
LTDB - LEAK TRACING DYE, BLUE	32
LTDG - LEAK TRACING DYE, YELLOW/GREEN	32
LTDR - LEAK TRACING DYE, RED	32
LD - LEAK DETECTOR	21
LDS - LEAK DETECTOR, SPRAY	21
MT - PLUMBER'S PUTTY	10
NI - ANTI-SEIZE LUBRICANT	9
NW - DRAIN OPENER	16
OM - OPEN MESH CLOTH	13
PCL - CLEAR PRIMER	6
PCW - WEATHERPROOF PVC CEMENT, CLEAR	4
PGL - HEAVY BODIED PVC CEMENT, GRAY	3
PL - CLEAR MEDIUM BODIED PVC CEMENT	3
POW - THREAD SEALANT	9
PPL - PURPLE PRIMER	6
PRL - CLEAR REGULAR PVC CEMENT	3
PSA - ATHLETIC INVERTED MARKING PAINT	32

STOCK CODE	PAGE	STOCK CODE	PAGE	STOCK CODE	PAGE
QK - DRAIN CLEANER	16	#21 - CUTTER BLADE	30	#318, #319 - TRENCH SHOVEL	24
QS - PIPE JOINT LUBE	14	#22 - CUTTER SPRINGS	30	#326 - SHOVEL, ROUND POINT	24
S1WR - WAX RING, REGULAR	18	#24 - 1/2" PIPE INSULATOR	34	#334 - 8# SLEDGEHAMMER	23
S1WS - WAX RING, FLANGED	18	#25 - 3/4" PIPE INSULATOR	34	#336 - 12# SLEDGEHAMMER	23
S260 - PTFE TAPE	10	#26 - 1" PIPE INSULATOR	34	#337 - 16# SLEDGEHAMMER	23
S520 - PTFE TAPE	10	#33 - 4-WAY VALVE KEY	34	#367 - CAUTION TAPE, 1000'	34
S1296 - PTFE TAPE	10	#38 - 1-5/8" RATCHET CUTTER	29	#368 - CAUTION TAPE, 300'	34
SB - POOL & SPA PVC CEMENT	4	#39 - CUTTER BLADE	29	#389 - SOFT TOUCH JAWS	27
SBG - FUEL OIL ADDITIVE	21	#40 - CUTTER SPRING	29	#391 - ROUND WONDER JAWS	27
SG - MULTI-PURPOSE SILICONE GREASE	14	#46 - MASON TWINE	34	#392 - SQUARE WONDER JAWS	27
SH - HI-TEMP ANTI-FREEZE SOLUTION	20	#48 - CAULKING GUN	13	#393 - SOFT TOUCH PLIERS	27
SLIME - GASKET LUBE	14	#49 - WIRE PULLING TWINE	34	#394 - SOFT JAW PLIERS	27
SST260 - STAINLESS STEEL PTFE TAPE	10	#56 - CAULKING GUN	13	#395 - SOIL PROBE TIPS	25
SSTW520 - STAINLESS STEEL PTFE TAPE	10	#64 - 20" METER KEY	25	#397 - 6' METER KEY	25
ST - THREAD SEALANT	8	#65 - 42" METER KEY	25	#398 - METAL STUD PUNCH	34
STS - BOILER SEALER	21	#67 - HACKSAW	28	#399 - 6' VALVE WRENCH, TELESCOPIC	25
SW260 - PTFE TAPE	10	#91 - CUTTER SPRINGS	29	#400 - 7' METER KEY	25
SW520 - PTFE TAPE	10	#92 - CUTTER SPRINGS	30	#401 - 8' METER KEY	25
SW1296 - PTFE TAPE	10	#118 - 1/2" FITTING REAMER	31	#402 - 8' VALVE WRENCH, TELESCOPIC	25
SX520 - PTFE TAPE	10	#119 - 3/4" FITTING REAMER	31	#403 - 7' METER KEY, 1-1/4" WRENCH	25
T260 - PTFE TAPE	10	#120 - 1" FITTING REAMER	31	#404 - 3 IN 1 SERVICE WRENCH	25
T520 - PTFE TAPE	10	#123 - 1-1/2" FITTING REAMER	31	#405 - SWIMMING POOL WRENCH	27
T1296 - PTFE TAPE	10	#124 - 2" FITTING REAMER	31	#430X,440X - TONGUE & GROVE PLIERS	26
T - THREAD SEALANT	8	#125 - 3" FITTING REAMER	31	#501 - RUBBER HOSES	15
TAL - THREAD SEALANT	9	#126 - 4" FITTING REAMER	31	#704 - MARKING GUN	32
TC - TRANSITION CEMENT	6	#127 - 1-1/4" RATCHET PIPE CUTTER	29	#705 - MARKING WAND	32
TDC - DRAIN OPENER	16	#128 - CUTTER BLADE	29	#BR - BRUSHES	33
TDTP - LIQUID DRAIN TRAP PRIMER	15	#129 - CUTTER SPRINGS	29	#CGW - GALLON CANS	33
TF - THREAD SEALANT	8	#130 - 1-1/2" RATCHET PIPE CUTTER	30	#CGWR - GALLON ROLLER	33
TFB - HAND WIPES	16	#131 - CUTTER BLADE	30	#CGWS - GALLON SWAB	33
TGT - Gas Line PTFE Tape	10	#132 - CUTTER SPRINGS	30	#CHP - 1/2 PINT CANS	33
TGTW - Gas Line PTFE Tape	10	#143 - 10 mil PIPE WRAP TAPE	34	#CPP - PINT CANS	33
THC - HAND CLEANER	16	#145 - WATER HEATER ELEMENT WRENCH	27	#CQ, #CQ100 - QUART CANS	33
TL - PTFE TAPE	10	#147 - SAW BLADE	28	#DP, #DPA - PINT DAUBERS	33
TLW - PTFE TAPE	10	#150 - INTERNAL PIPE CUTTER	31	#DQ, #DQA - QUART DAUBERS	33
TLX - PTFE TAPE	10	#151 - CUTTER BLADE	31	#DPS - PINT CPVC DAUBERS	33
TU - THREAD SEALANT	8	#152 - 7-1/2" INTERNAL PIPE CUTTER	31	#EZ-725 - SUBMERSIBLE PUMP	15
TUBC - URINAL CLEANER	16	#154 - CUTTER BLADE	31	#EZ-1150 - SUBMERSIBLE PUMP	15
TUTS - WATERLESS URINAL TRAP SEALANT	15	#156 - 42" METER KEY	25	#GLS - APPLICATOR SWABS	33
TWF - WATER SOLUBLE FLUX	14	#159 - 6-1/2" PIPE PLIER	26	#GLSA - APPLICATOR SWABS	33
W260 - PTFE TAPE	10	#160 - TELESCOPIC BASIN WRENCH	27	#MP-BLACK - AEROSOL PAINT	32
W520 - PTFE TAPE	10	#161 - 9-1/2" PIPE PLIERS	26	#MP-BLUE - AEROSOL PAINT	32
WD - CUTTING OIL, DARK	11	#162 - 10" PIPE PLIERS	26	#MP-CLOUD WHITE - AEROSOL PAINT	32
WET - WEATHERPROOF PVC CEMENT, BLUE	4	#163 - 12" PIPE PLIERS	26	#MP-GREEN - AEROSOL PAINT	32
WL - CUTTING OIL, LIGHT	11	#164 - 12" PIPE PLIERS	26	#MP-HOT ORANGE - AEROSOL PAINT	32
WP - BLUE SAND CLOTH	13	#165 - 16" PIPE PLIERS	26	#MP-PINK - AEROSOL PAINT	32
X260 - PTFE TAPE	10	#166 - SNAPPER CUTTER	29	#MP-RED - AEROSOL PAINT	32
XHG - HEAVY BODIED PVC CEMENT, GRAY	4	#167 - CUTTER BLADE/PIN	29	#MP-YELLOW - AEROSOL PAINT	32
XHW - HEAVY BODIED PVC CEMENT, WHITE	4	#168 - 9-1/2" UTILITY PLIERS	26	#PB - BRUSHES, PAINT STYLE	33
0755, 0750 - KITCHEN & BATH - WHITE	12	#175, #178 - LONG NOSE PLIERS	26	#PBC - PIPE BEVELER	31
0765 - KITCHEN & BATH - CLEAR	12	#180 - PVC SAW w/18" BLADE	28	#PBI - PIPE BEVELER	31
075522 - KITCHEN & BATH - BISCUIT	12	#181 - PVC SAW BLADE	28	#PBS - PIPE BEVELER	31
0770 - LIFETIME ULTRA 230	12	#182 - PVC SAW w/13" BLADE	28	PRO-STRIPER - MARKING MACHINE	32
081601 - INDUSTRIAL RTV SILICONE - WHITE	12	#183 - PVC SAW BLADE	28	#SPRL - TRIGGER SPRAYER	33
0810 - 100% SILICONE SEALANT - WHITE	12	#184 - PVC SAW - PISTOL GRIP	28	#US9 - 9" RUBBER STRAP	23
0820 - 100% SILICONE SEALANT - CLEAR	12	#192 - INTERNAL PIPE CUTTERS	31	#US15 - 15" RUBBER STRAP	23
082601 - INDUSTRIAL RTV SILICONE - CLEAR	12	#196 - 20-1/4" PIPE PLIERS	26	#US20 - 20" RUBBER STRAP	23
081661 - INDUSTRIAL RTV SILICONE - BLACK	12	#205 - 2" PIPE RATCHET CUTTER	30	#US31 - 31" RUBBER STRAP	23
080901 - HEAT RESISTANT RTV SILICONE	12	#206 - CUTTER BLADE	30	#US41 - 41" RUBBER STRAP	23
0909 - FOAM & FILL	12	#207 - CUTTER SPRINGS	30	#VS15 - 1-1/2" VENT SCREEN	32
0909 - FOAM & FILL	12	#240 - "T-HANDLE" CABLE SAW	28	#VS2 - 2" VENT SCREEN	32
PLUMB-PRO		#243 - NO HUB TORQUE WRENCH	27	#VS3 - 3" VENT SCREEN	32
"QUALITY TOOLS FOR THE TRADE"		#244, #245, #246 - SOCKET RATCHET WRENCH	26	#VS4 - 4" VENT SCREEN	32
		#274 - DRAIN SPADE	24	#VS6 - 6" VENT SCREEN	32
#4 - "6 IN 1" SCREWDRIVER	22	#278 - 10# SLEDGEHAMMER	23	#VSC2 - 2" CPVC VENT SCREEN	32
#5 - "6 IN 1" SCREWDRIVER	22	#279 - PICK MATTOCK	23	#VSC3 - 3" CPVC VENT SCREEN	32
#12 - TORPEDO LEVEL	34	#280 - SOIL PROBE-FIBERGLASS	25	#VSC4 - 4" CPVC VENT SCREEN	32
#15 - 1" PIPE RATCHET CUTTER	29	#282 - DRAIN SPADE	24	#WS10 - 10' CAM BUCKLE STRAP	23
#16 - CUTTER BLADE	29	#283 - ROUND POINT SHOVEL	24	#WS16 - 16' RATCHET STRAP	23
#17 - 2" PIPE RATCHET CUTTER	30	#284 - SQUARE POINT SHOVEL	24	#WS25 - 25' RATCHET STRAP	23
#18 - CUTTER BLADE	30	#285 - SOIL PROBE-FIBERGLASS	25		
#20 - 2" PIPE RATCHET CUTTER	30	#301 - MEASURING TAPE	34		

THE INDUSTRY STANDARD FOR OVER 100 YEARS

J.C. Whitlam Manufacturing Company began manufacturing quality chemical products in 1900 with the introduction of TYTE-UNYTE® (pronounced Tight-Unite) Thread Sealing Compound for threaded pipe connections. It was the first non-poisonous thread compound manufactured and still remains the standard of the plumbing, heating and refrigeration industry today. WHITLAM has continued to be the leader in producing quality products for plumbing, heating, refrigeration, oil field and industrial applications. The sales force of Whitlam and Plumb-Pro divisions consists of over 80 manufacturer representatives in the U.S.A. and in eighteen foreign countries.

★ WAREHOUSE LOCATIONS

Phoenix, AZ; Livermore, CA; Cerritos, CA; Longwood, FL; Orlando, FL; Salt Lake City, UT; Wadsworth, OH; Carp, ON; Regina, SK; Pt. Coquitlam, BC; Denver, CO

WORLD HEADQUARTERS AND MANUFACTURING IN WADSWORTH, OH

CONVENIENTLY LOCATED, WHEREVER YOU ARE

■ Whitlam and Plumb-Pro sales are coordinated through more than 80 teams of manufacturer representatives in North America and internationally.



200 West Walnut Street • PO Box 380 • Wadsworth, Ohio 44282
US/CANADA PH: (800) 321-8358 • US/CANADA FAX: (800) 537-0588
INT'L PH: +1 (330) 334-2524 • INT'L FAX: +1 (330) 334-3005
www.jcwhitlam.com • email: sales@jcwhitlam.com